

# New Mapping System – Guidance (Planning)

## [General map navigation](#)

### [Locating a site](#)

[Location search bar](#)

### [Full Address Search](#)

[Street Search](#)

[Postcode Search](#)

[Building Name](#)

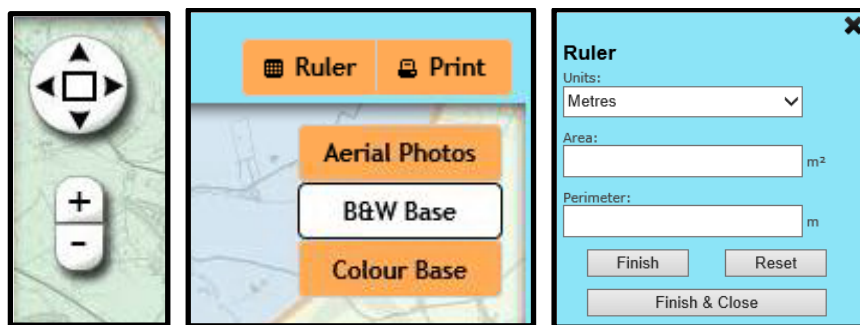
[List Properties](#)

### [Planning Application Site History](#)

[Planning Application Sites](#)

## General map navigation

1. Move the map – click and drag with mouse or use the arrows in the top left corner.
2. Zoom in and out – use the wheel on your mouse or the plus and minus buttons in top left corner.
3. Use buttons on the right to change the layer view of the map between black and white, colour and aerial photo.
4. Ruler button provides a measuring tool – select the required units and then click on the start point and then again at the end point of the map to be measured (this can be a straight line which is shown as “Perimeter” or an area. When drawing an area, click the mouse at each corner of the shape and then double click and the last two points will be automatically completed to create the polygon.
5. Print button creates a PDF copy of the current map view containing the copyright and scale information.



## Locating a site

### Location search bar

Entering a location in the search bar above the map will provide a drop down list of results from the gazetteer containing your search contents (Figure 1). This type of search displays instant results and the list will update as more information is entered, allowing a variety of search criteria to be used. Selected a property address from the results list will zoom the map into this location, marked with a pin (Figure 2). Clicking on the pin will display the full address, Unique Property Reference Number (UPRN) and Ward details (Figure 3). The pin can be selected and dragged to any area on the map to display the relevant information for that location.

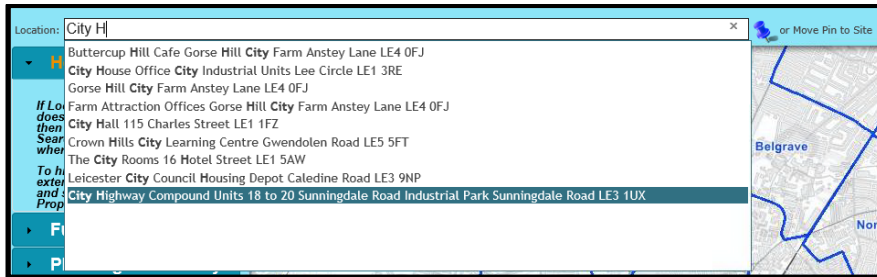


Figure 1: Location search bar

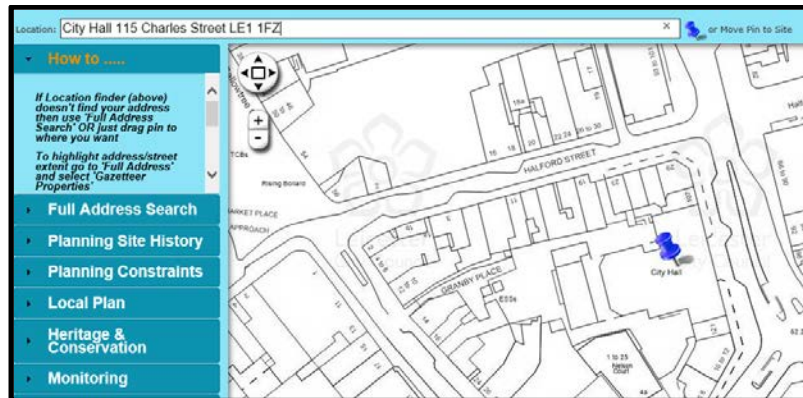


Figure 2: Zoom to selected location



Figure 3: Location details

## Full Address Search

Provides the following search types:

Street Search

Postcode Search

Building Name

Select the appropriate search type and enter your search criteria.

All relevant results will be displayed in a list (Figure 4).

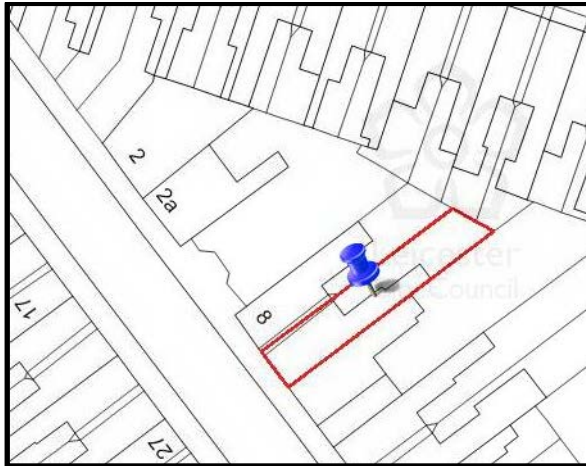
Click on the appropriate result to expand and view all properties for the selected result. Once the individual property has been highlighted (blue circle on Figure 5) it will be displayed on the map with a pin and a red line around the boundary of the site (Figure 6). Clicking on the pin will display some basic details about the property and its ward (Figure 7).



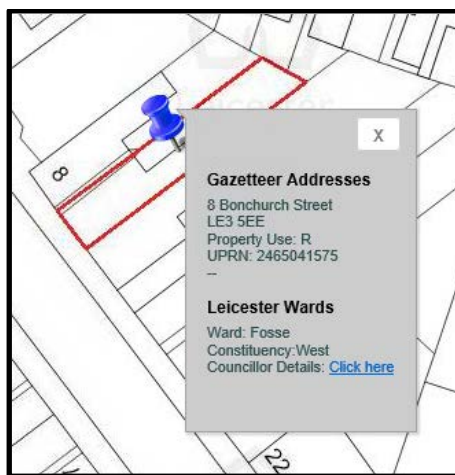
Figure 4: Search Results (1)



Figure 5: Search Results (2)



**Figure 6: Selected search result displayed on map**



**Figure 7: Property Information Display**

### List Properties

Click this link for a list of all properties for a location. For example, if you have used one of the above methods to find a property such as Auburn House, the individual flats within that building will not be displayed. Use this function to view a full list of all properties within the selected building.

### Planning Application Site History

This section provides information regarding planning applications dealt with by Leicester City Council.

### Planning Application Sites

Once a site has been located and pinned, this link can be used to view planning application sites – each site has a Planning Property Reference Number (PPRN). All PPRNs associated with your pinned site will be listed to the left of map and marked on the map (Figure 8). Clicking one of the PPRNs from the list will highlight the

boundary of that planning site in red on the map and display a link to view its planning history on the website (Figures 9 and 10).

Note: There may be planning sites which do not have any planning applications associated with them.

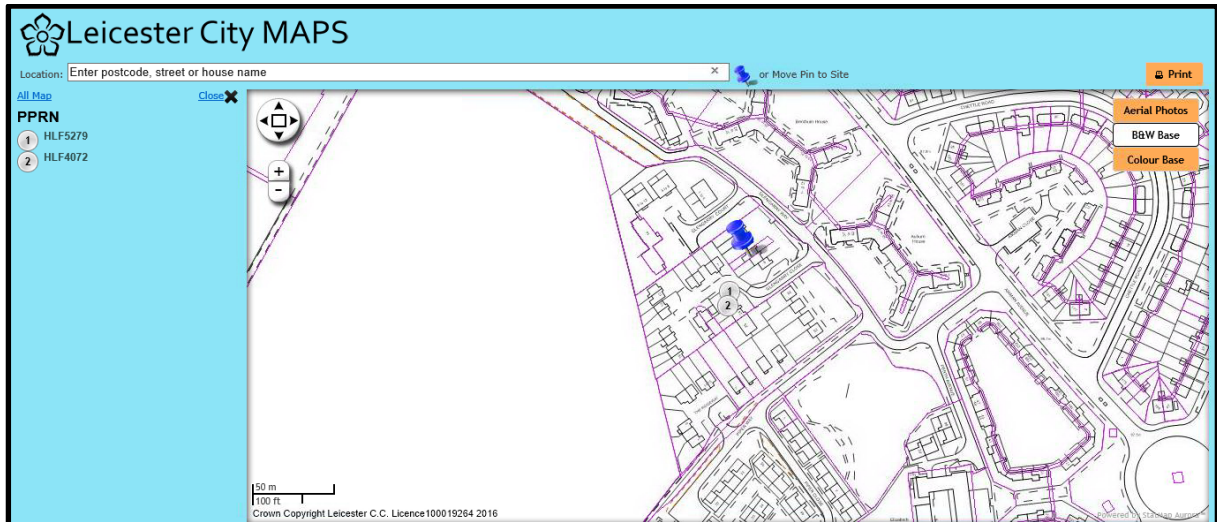


Figure 8: PPRN list view

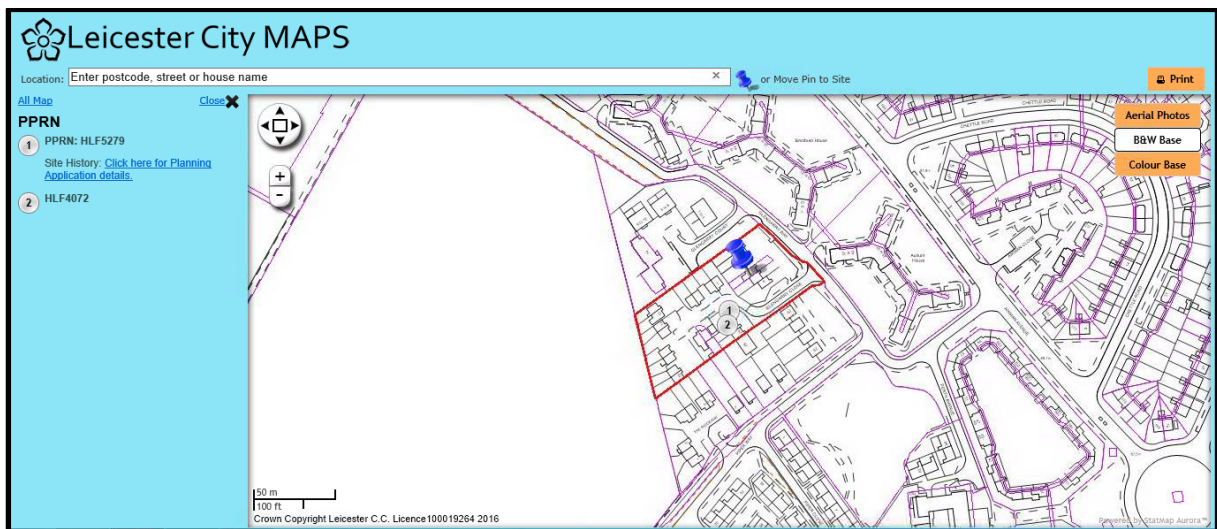


Figure 9: Selected PPRN view



# environment & planning

[leicester.gov.uk/environment](http://leicester.gov.uk/environment)  
[leicester.gov.uk/planning](http://leicester.gov.uk/planning)

[Planning Search](#)

[Appeals Search](#)

[Enforcements Search](#)

## Search Results

[Back](#)

Click the headers to change sort

Click Application No for details

Click Site Ref for full site history

<a href="#">Application No</a>	<a href="#">Site Ref (PPRN)</a>	<a href="#">Location</a>	<a href="#">Ward</a>	<a href="#">Date Received</a>	<a href="#">Decision Date</a>	<a href="#">Decision</a>	<a href="#">Applicant</a>	<a href="#">Agent</a>
<a href="#">19890178</a>	<a href="#">HLF5279</a>	GLENGARRY WAY: NORTH OF PIPER WAY	Western	25/01/1989	21/03/1989	Conditional approval	DE MONTFORT HOUSING SOCIETY	

Figure 10: Planning Application History view