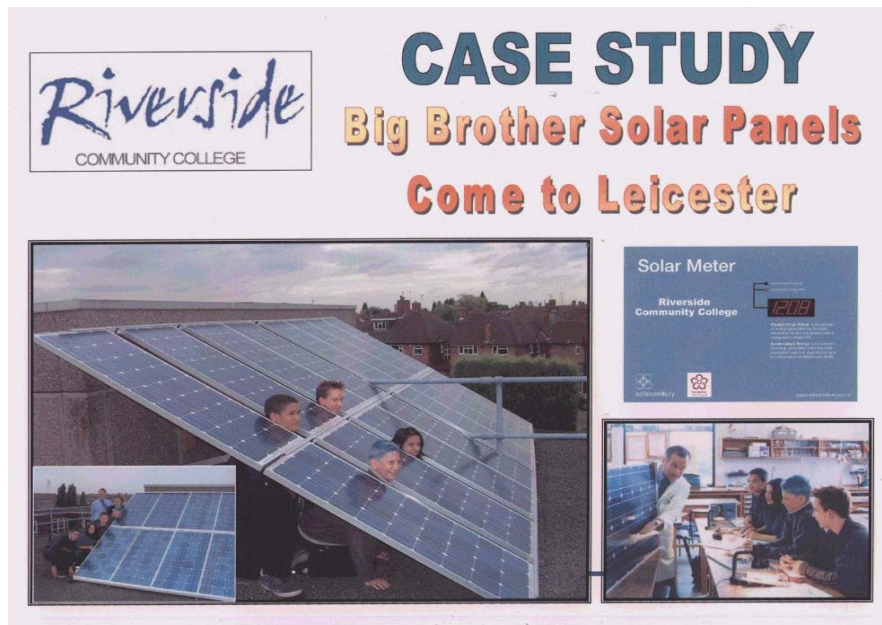




ENERGY MANAGEMENT GROUP

2-4 Market Place South, Leicester. LE1 5HB. Tel: 0116 2995141 Email: Don.Lack@energy-advice.co.uk www.energy-advice.co.uk

BIG BROTHER PANELS



In 2001, 16 Photovoltaic solar panels were installed in Riverside Community College. These panels had been used in the Big Brother television programme and were purchased by the City Council after the programme finished.

The main objective of this project was to promote the importance of energy conservation and renewable energy within schools. Hopefully young people will take this experience with them as they become the consumers and leaders of tomorrow.

Economic Benefits

This system will generate up to the equivalent of 1,425 kWh (units of electricity) per year. Surplus electricity will be exported to the national grid.

Environmental Benefits

The school will produce cleaner, greener electricity, thereby cutting CO₂ emissions by 998kg a year (enough to fill 72,818 party balloons)

Educational Support

The partnership approach taken in this project aims to raise awareness of Photovoltaics (PV) amongst the next generation of energy users by making available a 'hands-on' demonstration system, educational material, website and monitoring systems.

Public Relations

The Big Brother programme was one of the most topical programmes in the summer season and therefore the mention of the Big Brother connection in publicity gave the project more publicity and gave more emphasis on raising awareness.

