

Knighton Park

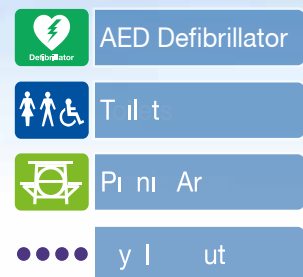
Visitor Guide



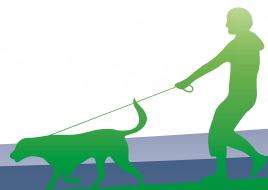
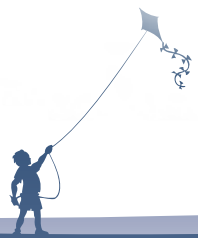
Leicester
visitleicester.info



Lying two miles to the south of the centre of Leicester, Knighton Park has become one of the city's most popular amenities.



last updated June 2023



Leicester
visitleicester.info



History

Knighton Village appears in the Domesday Book under its Scandinavian name Cnihetone. In the 1720's, Edmund Cradock, a wool draper of Leicester bought Knighton Hall and its associated farmland. The City Council bought land from the Cradock-Hartopp trustees just before the Second World War with the intention of establishing a park but work was not started until 1953.



Park features

The Wash (or Saffron) brook provides a haven for wildlife as does the enclosed spinney which was designated a wildlife reserve for all time in 1932 and is now a local Nature reserve.

Play areas: There are three play areas: an infant play area for children aged 2 to 6 years and a play area that caters for 6+ and includes a space net, swings and a multi-function climbing frame.

The third play area has been created following funding received from The Friends of Knighton Park, this play area features equipment designed for children with disabilities to enjoy.

Sensory Garden: The Garden was created to enable visitors with disabilities to access a variety of plants, flowers and experience the different smells, textures and sound. Restricted opening times apply.

Heath garden: This garden provides a rockery garden, pond, shrubs, heathers and annual plants that create a peaceful and colourful part of the park.

Sport facilities: There are a number of sports facilities on the park including – two tennis courts, football pitches, cricket and an athletics track marked out in the summer months. All these pitches are available for hire by contacting sport on parks.

The Friends of Knighton Park

They are a voluntary group whose aim is to preserve and improve Knighton Park and its facilities for the benefit of all current and future visitors.

The committee, on behalf of members, work with Leicester City Council to promote the Park. The group participate in the running of events, actively fundraise and apply for grants to enhance park facilities. For more information visit:

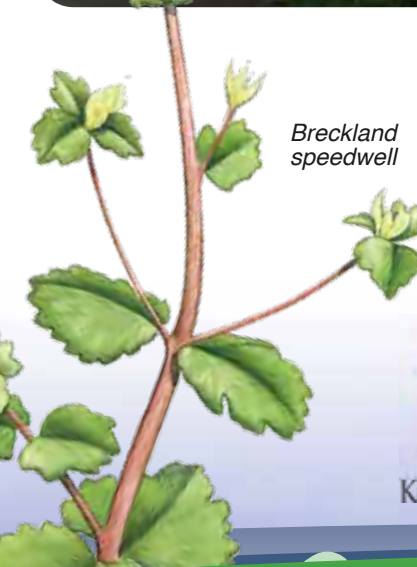
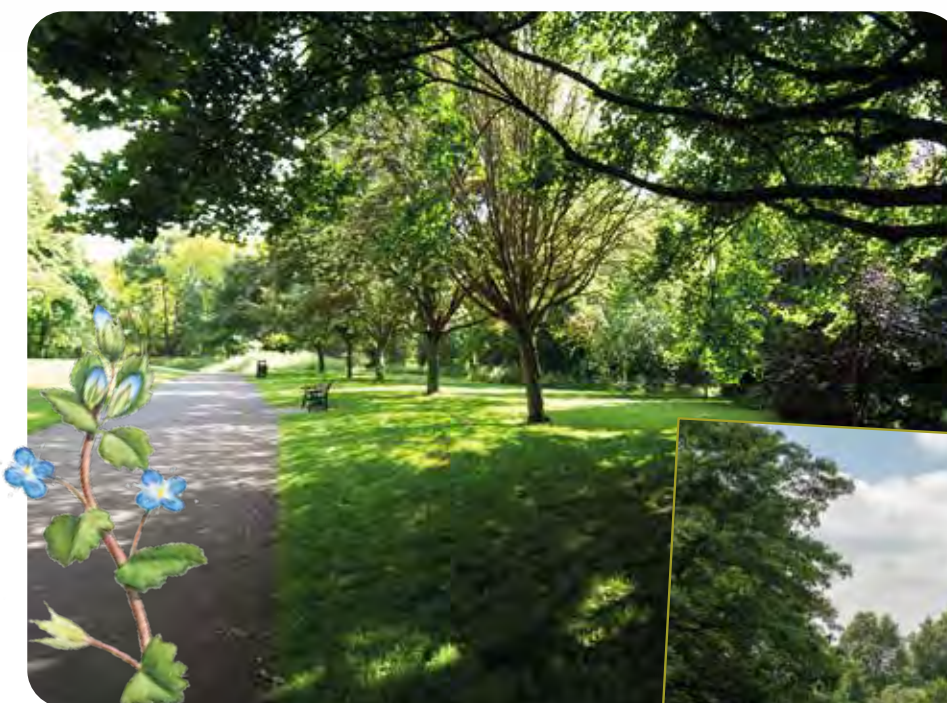
www.friendsofknightonpark.co.uk

Additional features and facilities

Events field • Outdoor gym • Pitch and Putt
Tree trail • Football pitches • Tennis courts
Recycling • Bottle banks

How to get there

Car Parking is available at the Palmerston Way entrance. The best way to reach the park is on foot, by bus or bicycle; all of Leicester's Parks are linked to the national cycle network routes 6, 63 and 77.



Breckland speedwell



Friends of
KNIGHTON PARK

