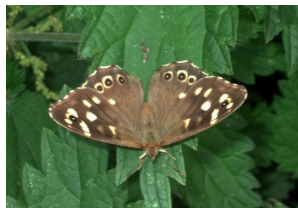


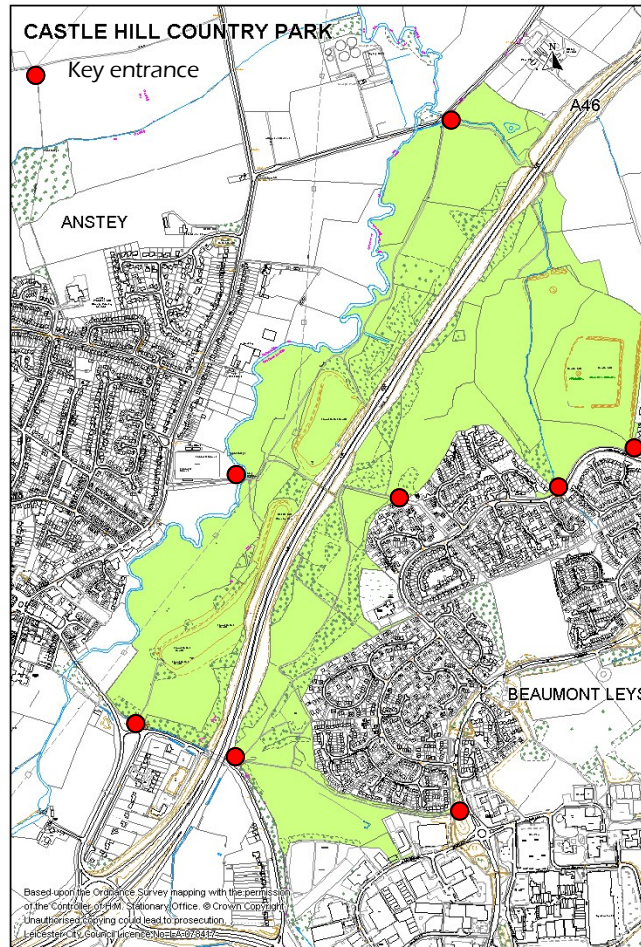
A Friends of Group for Castle Hill Country Park was established in 2008, and are actively involved in park improvements and events. A Park User Group meets locally on a quarterly basis to discuss park management matters. If you are interested in joining the Friends of, or attending the User Group meetings, please contact either Park Services or the Friends.



RINGLET



SPECKLED WOOD

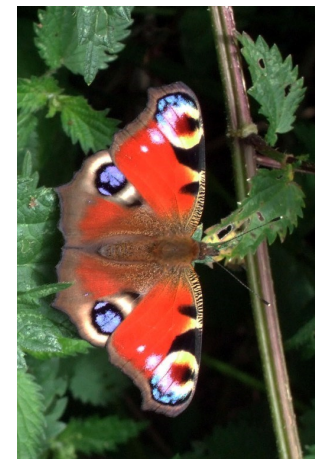
**CASTLE HILL COUNTRY PARK**

Park Services,
Phone: 0116 454 1003
email: parks@leicester.gov.uk

Friends of Castle Hill Country Park
email:: fochcp@aol.com



THE BUTTERFLIES OF CASTLE HILL COUNTRY PARK



PEACOCK

Tel: 0116 454 1003

CHCP Natural History Series: Leaflet No.1.

THE BUTTERFLIES CASTLE HILL COUNTRY PARK

The Park's diverse habitat of grasslands, woodlands and wetlands, together with neighbouring arable fields and private gardens support a variety of butterflies (Lepidoptera).



Butterfly species common to the open fields and meadows include the aptly-named Meadow Brown, Small Copper, Orange Tip, Green-veined White, Small Skipper and Large Skipper. The butterflies and their caterpillars feed on various grasses and plants such as Meadow Grass, Cock's Foot, Garlic Mustard and Thistles. The Orange-tip and Green-veined White tend to favour damp areas, and are often seen down by the Rothley Brook or by the old medieval fishpond at 'Castle Hill'.



Butterfly species commonly associated with the Park's woodlands, woodland glades and hedgerows include the Speckled Wood, Comma, Ringlet and Gatekeeper. These butterflies feed variously on nettle, grasses and bramble flower, often blending in well with their surrounds.



Butterflies more often associated with private gardens, including the Peacock, Red Admiral and Small Tortoiseshell, are also common on the park, as are Large Whites and Small Whites, butterflies found in abundance amongst the cabbage-related plants growing in neighbouring fields. Some butterflies have a close association with a particular plant or tree, such as the Brimstone, favouring Buckthorn and Alder Buckthorn, and the Common Blue which is often found feeding or resting on Bird's-foot trefoil.

Depending on the number of broods, and the weather, butterflies may be seen 'on the wing' any time from early spring through to October. The Meadow Brown is one of few butterflies to fly in dull weather.



Butterflies recorded for Castle Hill Country Park include: Gate Keeper, Ringlet, Speckled Wood, Large Skipper, Orange Tip, Brimstone, Common Blue, Skipper, Small Tortoiseshell, Small Cabbage White, Large Cabbage White, Green-Vein White, Meadow Brown and Red Admiral.

If you spot any other butterflies on Castle Hill Country Park we would be happy to hear from you, as would the Leicestershire Lepidoptera Recording Scheme:

Email: chi@leics.gov.uk

Tel: 0116 267 1377



CASTLE HILL COUNTRY PARK

Park Services,
Phone: 0116 454 1003