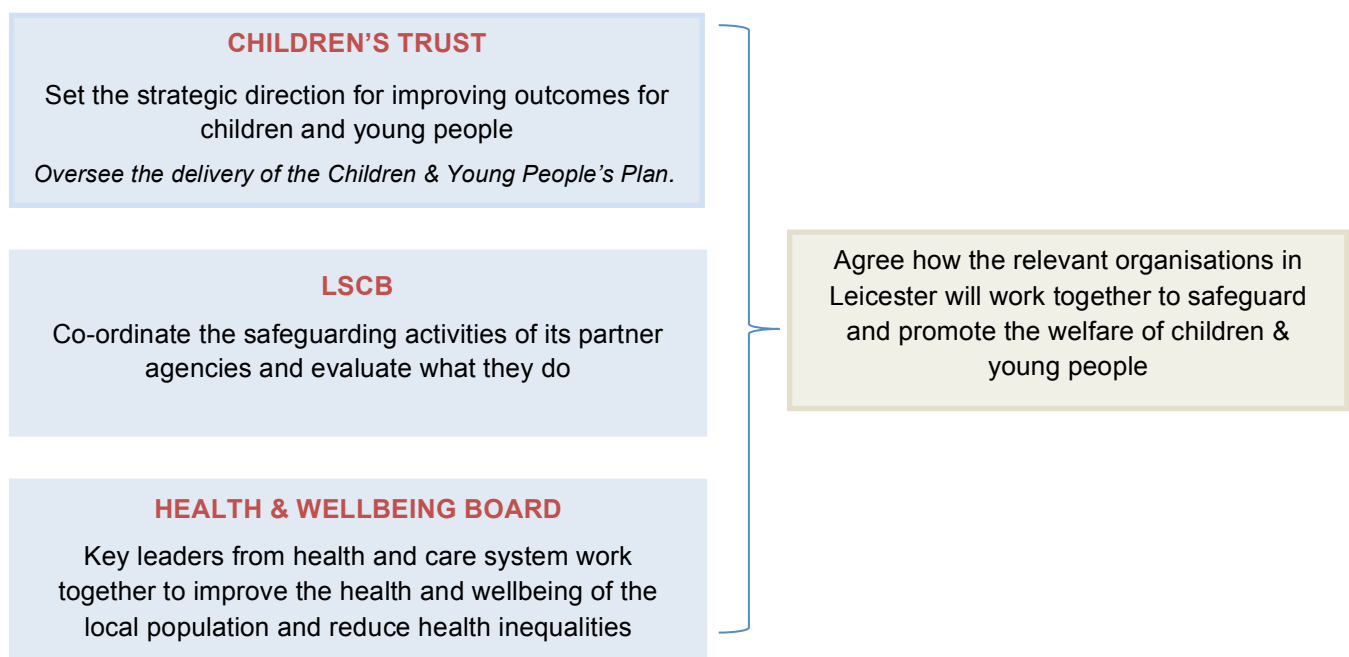


Protocol Agreement between the Leicester Safeguarding Children Board (LSCB), Leicester Children's Trust ('the Trust') and the Leicester Health and Wellbeing Board (H&WB)

1. Purpose of agreement

- To outline the respective roles and functions, including arrangements for challenge, scrutiny and performance management.
- To set out the accountability and reporting arrangements between the LSCB, the Trust and the H&WB in respect of safeguarding and promoting the welfare of children and young people.

2. Roles & Functions¹



3. The Children's Trust

In respect of the LSCB, the Children's Trust will:

- Respond formally to issues brought to it by the LSCB, advising of action and outcome;
- Refer safeguarding issues to the LSCB for investigation, evaluation or action or to develop procedures;
- Scrutinise and respond to the LSCB's annual report and progress reports;
- Consult the LSCB on its Children and Young People's Plan, priorities & actions;
- Invite the Chair of the LSCB to sit as a Trust member.

The Children Act (2004) section 10 requires local authorities and relevant partners to co-operate to improve the wellbeing of children and young people through local arrangements. In Leicester it is agreed that the Children's Trust coordinates those arrangements.

The Children Act (2004) and Working Together 2013 requires local authorities to establish and support a Local Safeguarding Children Board as an independent partnership, neither subordinate to nor a subgroup of any other local body.

In respect of the H&WB, the Children's Trust will:

- Respond formally to issues brought to it by the H&WB, advising of action and outcome in due course;
- Evaluate the impact of the joint health and wellbeing strategy on securing improved outcomes for children and young people as outlined in the Children and Young People's Plans.

4. The Leicester Safeguarding Children Board

In respect of the Children's Trust, the LSCB will:

- Advise the Trust on ways to improve safeguarding work;
- Participate in planning including influencing and scrutinising the Children's Plan;
- Use its' scrutiny role and statutory powers to influence the priority setting of the Trust;
- Deliver an annual report that provides a rigorous and transparent assessment of the performance and effectiveness of local services. The report should identify areas of weakness, the causes of those weaknesses, evaluate and where necessary challenge the action being taken;
- With a strong focus on protection and welfare issues, report to the Trust on areas of concern, particularly where strategic, co-ordinated action is required;
- Invite the Chair of the Trust to sit as an LSCB member.

In respect of the H&WB, the LSCB will:

- Ensure that the LSCB business plan is consistent with the joint health and wellbeing strategy and any related priority setting. Evaluate the impact of the joint health and wellbeing strategy on safeguarding outcomes, and of safeguarding on wider determinants of health outcomes;
- Submit its annual report to the H&WB for scrutiny, discussion and challenge.

5. The Health and Wellbeing Board

In respect of the Children's Trust, the H&WB will:

- Ensure that the health and wellbeing of children and young people is articulated in the vision and strategic plans generated by the board;
- Secure an integrated approach to the Joint Strategic Needs Assessment, ensuring comprehensive safeguarding data analysis in the JSNA, in line with Working Together guidance;
- In respect of the LSCB, the H&WB will:
- Help to ensure that safeguarding is 'everyone's business' and is reflected in the public health agenda and any related health policies and strategies.
- Ensure that the board is updated on progress made in the implementation of the health and wellbeing strategy.

Neither the Trust, the LSCB nor the H&WB has the power to direct other organisations. Partner agencies retain their own lines of accountability for their services.

Agencies have a responsibility however to challenge each other through the framework of the LSCB, the Trust and the Health and Wellbeing Board.

The LSCB, the Trust and their constituent partners will actively pursue fresh ways to challenge each other and to seek to improve outcomes for children and young people. Methods may include:

- Joint audits
- Peer reviews
- Learning from complaints
- Learning from inspection outcomes
- Development days

5. Approvals

Approved by:

Leicester Children's Trust Board

LSCB Executive Group

Leicester Health and Wellbeing Board