

How deprived is Leicester?

The English Indices of Deprivation 2015

3 out of 4
Leicester residents
live in the 40%
most deprived
areas in England.

Leicester is ranked
21st most
deprived Local
Authority area,
compared to 25th
in 2010.

There are fewer
areas in the
most deprived
10% in England
compared with
2010.

How is deprivation measured?

STEP
1

DATA:

Income, employment, education, health, crime, barriers to services and environment data are collected. These make up the seven domains.

STEP
2

GEOGRAPHY:

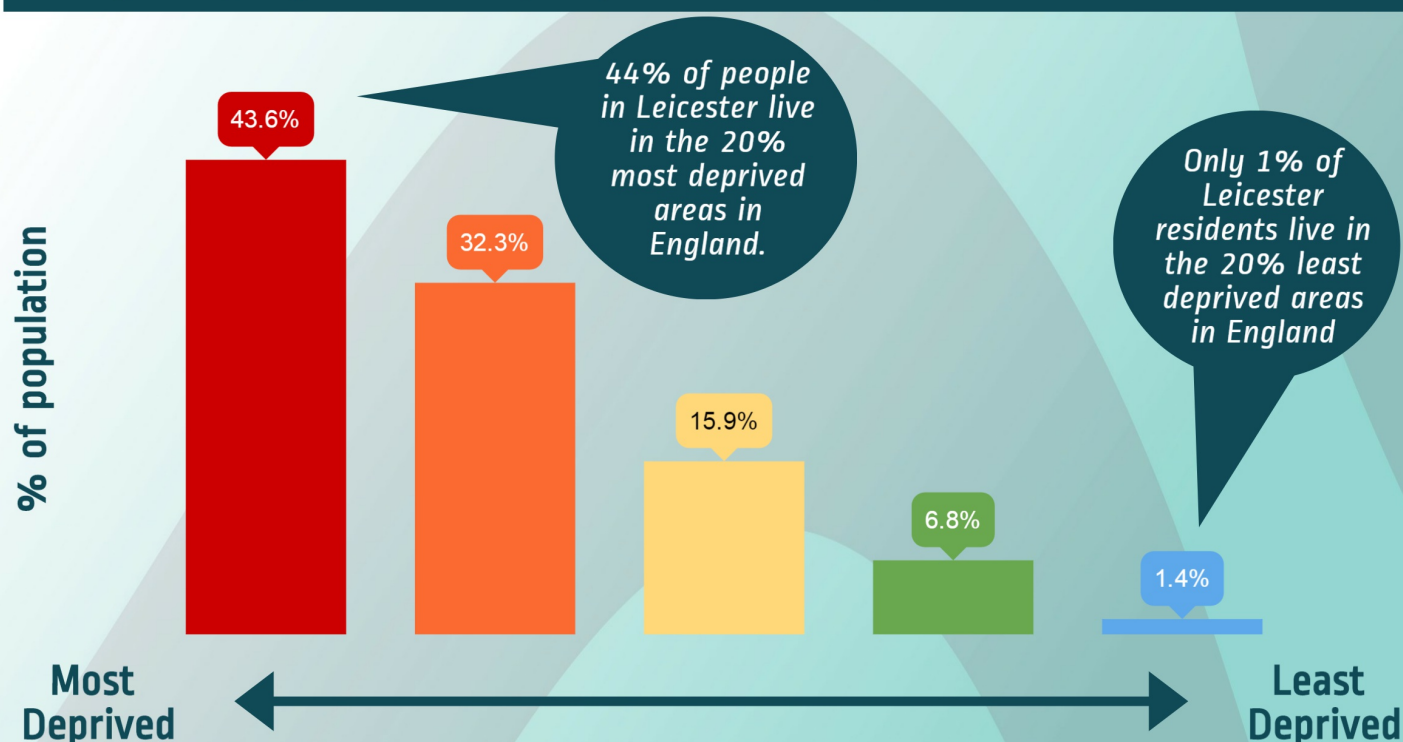
32, 844 lower-layer super output areas in England are measured according to deprivation. This allows for comparison of the 192 small areas in Leicester with England.

STEP
3

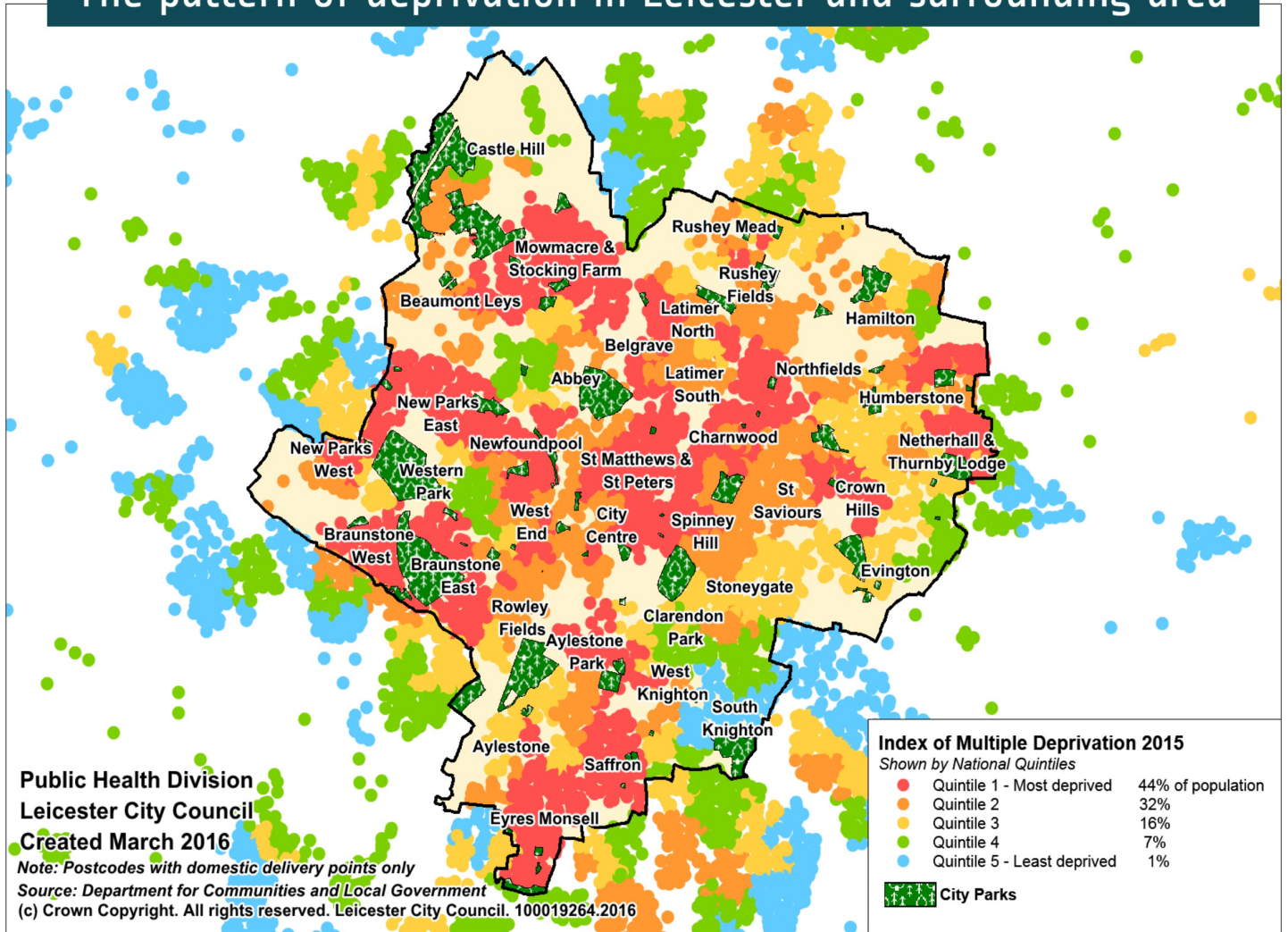
RESULT:

The data are combined as an Index of Multiple Deprivation [IMD]. Individual domain data as well as income deprivation affecting older people and children are also reported.

A higher proportion of people live in deprived areas in Leicester



The pattern of deprivation in Leicester and surrounding area



Deprivation by domain



1 in 4 Leicester residents live in areas of high deprivation [the 10% most deprived in England].



1 in 4 children live in areas of high income deprivation.



1 in 3 older people live in areas of high income deprivation.



1 in 6 residents live in areas of high health deprivation, with higher rates of illness, disability & early death.



1 in 4 residents live in areas of high crime deprivation.



1 in 3 people [children, young people and adults] live in areas of high education deprivation.

For further information and findings: <http://www.leicester.gov.uk/your-council/policies-plans-and-strategies/health-and-social-care/data-reports-and-information/>