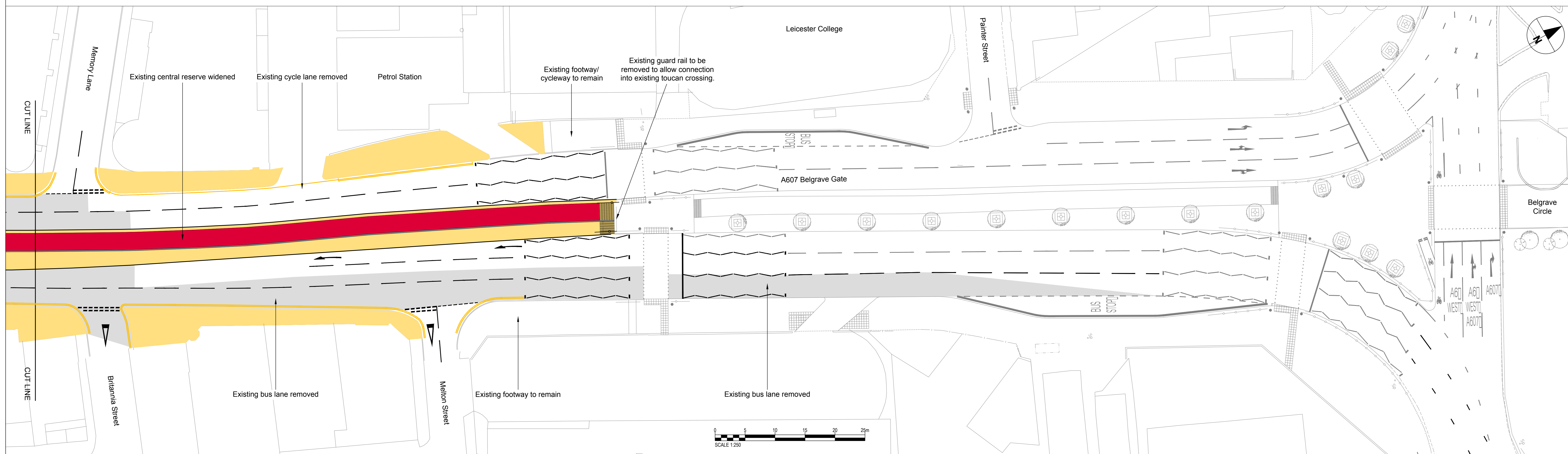
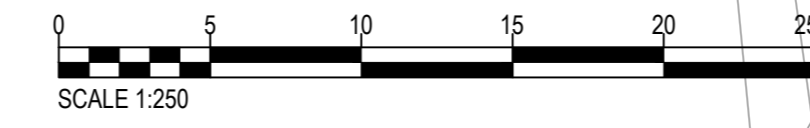
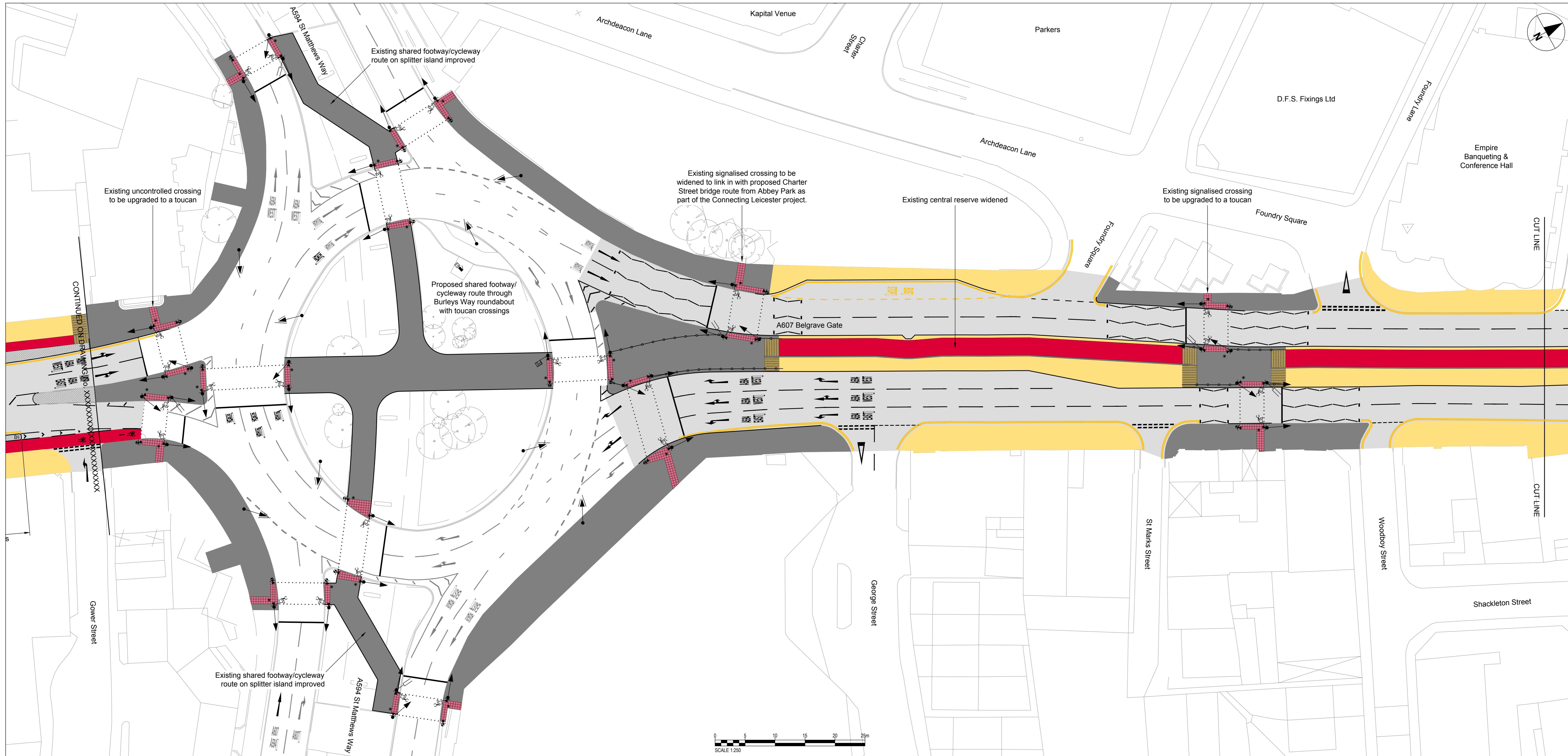


ISO A4 841mm x 1189mm



1. This drawing is to be read in conjunction with all other relevant documentation.
2. Do not scale from this drawing, use only printed dimensions.
3. This drawing is based on topographical survey data and as built data provided by Peak Surveying Services Ltd and Leicester City Council.
4. All dimensions in metres, all chainages, levels and coordinates are in metres unless defined otherwise.
5. All proposed white road markings are shown in black for clarity. Existing road markings are shown in grey. Waiting restriction road markings shown only within extent of proposed carriageway works.
6. Traffic signs, lighting columns and other street furniture not shown on this drawing.

- New Kerbline
- Carriageway Resurfacing
- Proposed Shared Footway/ Cycleway (Bituminous Surfacing)
- Proposed Cycleway (Red Coloured Surfacing)
- Footway Resurfacing (Gold Resin Bonded Gravel Surfacing)
- Tactile Paving Slabs
- Corduroy Paving Slabs
- Pedestrian Guardrail
- Traffic Signal Equipment



**WORK IN PROGRESS**

IR	DATE	DESCRIPTION
-	77/04/17	FOR CONSULTATION



This drawing has been prepared for the use of AECOM's client. It may not be used, modified, reproduced or relied upon by third parties, except as agreed by AECOM or as required by law. AECOM does not warrant, represent or provide any services or products to any party that uses or relies on this drawing without AECOM's express written consent. All measurements must be obtained from the stated dimensions.