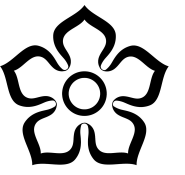


The information in this document has been used to support the preparation of the Local Plan. If you need assistance reading this document, or require it in a different format, please contact us via [email planning.policy@leicester.gov.uk](mailto:planning.policy@leicester.gov.uk) or call on 0116 454 0085.



Leicester City Council

Strategic Flood Risk Assessment 2022

Drawing Title
Fluvial Flood Extents (with defences)

Map Number: **Scale:** 1:50000 @A3



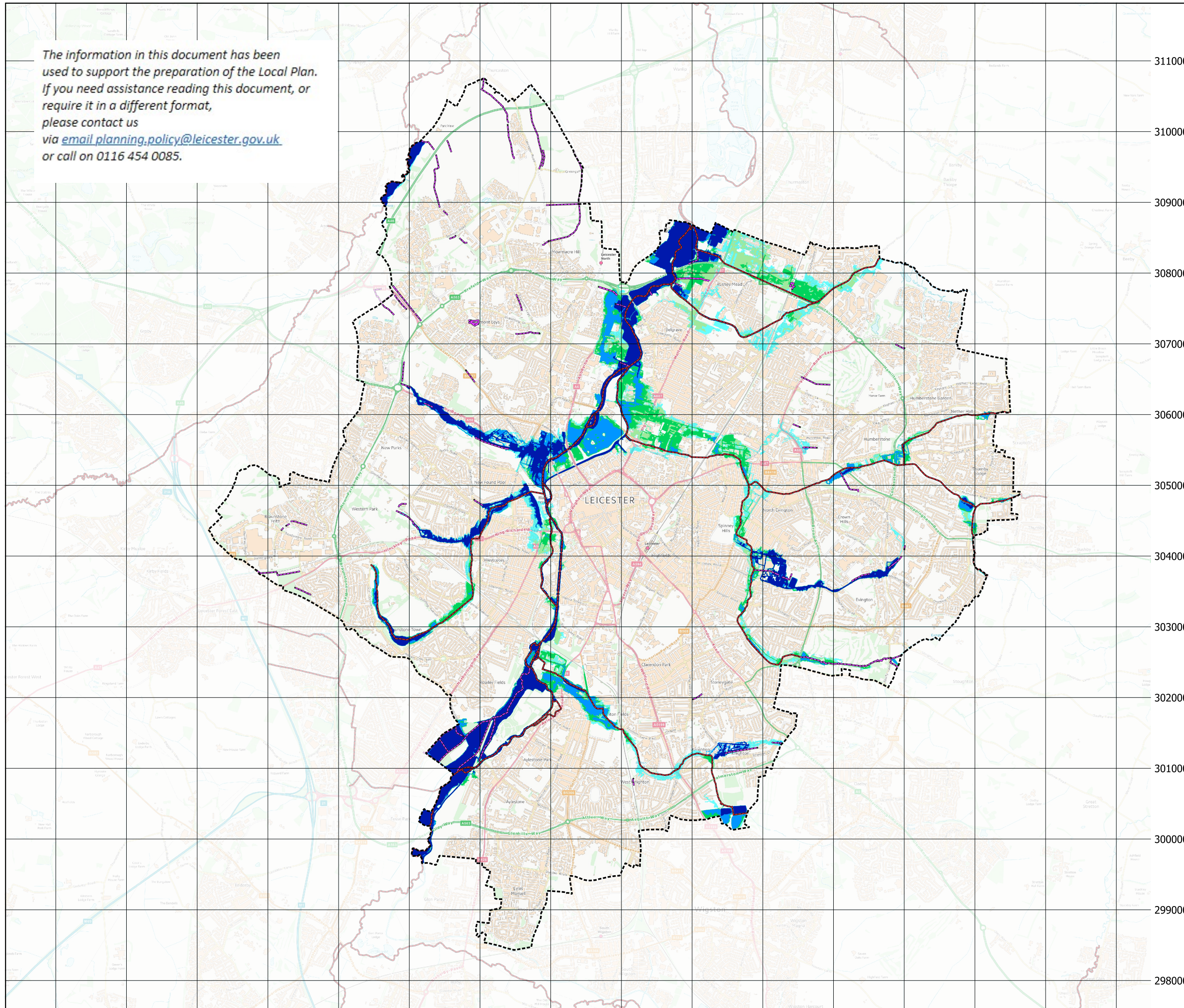
LEGEND

- Leicester administrative boundary
- Main Rivers
- Mapped Ordinary Watercourses
- 5% AEP (1 in 20 annual chance)
- 1% AEP (1 in 100 annual chance)
- 1% AEP +30% flow
- 1% AEP +50% flow
- 0.1% AEP (1 in 1000 annual chance)

N.B.
Only open channel ordinary watercourses identifiable from Ordnance Survey mapping are shown. Culverted Ordinary Watercourses are not. It is essential for developers to liaise with Leicester City Council and Severn Trent Water Ltd early in the development process to establish the presence or otherwise of culverted watercourses and sewers.

Flood extents are only shown for those watercourses for which hydraulic models are available. Analysis of other watercourses may be required as part of a Flood Risk Assessment.

This map was prepared solely for the Leicester 2022 Strategic Flood Risk Assessment. Flood risk data is periodically updated by the Risk Management Authorities (RMAs). When preparing a Flood Risk Assessment, planning applicants and consultants must obtain the most up to date information concerning flood risk from the RMAs. New information may be available which supersedes the data displayed on this map. This map is catchment scale and should not be relied upon at a local (planning application) scale. Contains OS data © Crown Copyright [and database right] (2022). Contains Environment Agency data © Copyright and/ or database right 2022.



451000 452000 453000 454000 455000 456000 457000 458000 459000 460000 461000 462000 463000 464000 465000 466000

311000
310000
309000
308000
307000
306000
305000
304000
303000
302000
301000
300000
299000
298000