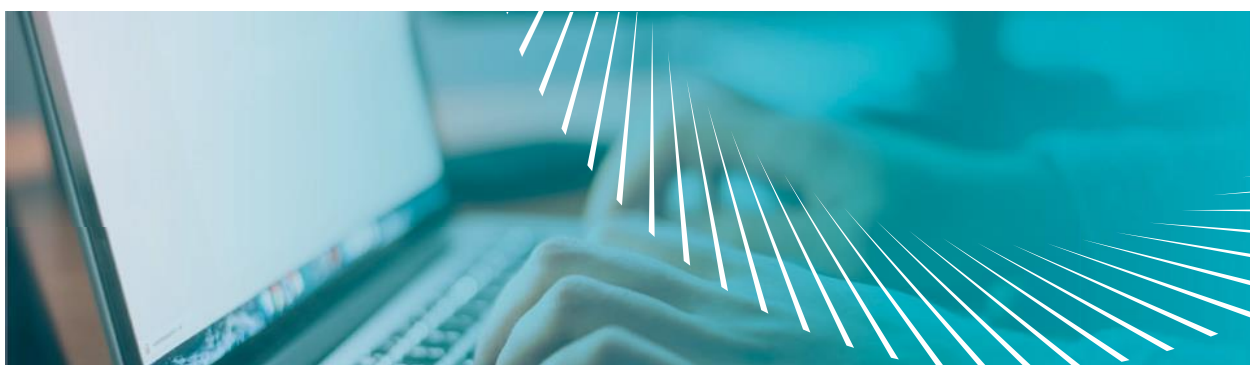

Leicester City Council

UKSPF Investment Plan

Evaluation of EU and CRF Projects



April 2023



Contact Information

Client: Leicester City Council
115 Charles Street
Leicester
LE1 1FZ

Client Lead: Joanne Ives, Economic Regeneration

Prepared By: Focus Consultants 2010 LLP
Focus House
Millennium Way West
Phoenix Business Park
Nottingham
NG8 6AS

Project: UKSPF Investment Plan – Evaluation of EU and CRF Projects

Document Title: Project Analysis

Date: April 2023

Authorised By: Heather Frecklington, Partner

Signature:

H. L. Frecklington

Focus Offices

NOTTINGHAM

Focus House
Millennium Way West
Phoenix Business Park
Nottingham
NG8 6AS
T: 0115 976 5050
E: enquiries@focus-consultants.com

LEICESTER

Olympus House
Unit 3, Main Street
Kirby Muxloe
Leicestershire
LE9 2AL
T: 0116 275 8315
E: leicesterenquiries@focus-consultants.com

LONDON

45-46 Lower Marsh
London
SE1 7RG
T: 0203 096 9717
E: londonenquiries@focus-consultants.com

Contents Page

	Page
Foreword	3
1.0 Introduction	4
2.0 Economic Baseline	5
3.0 Beneficiary Analysis	37
3.1 Project Beneficiary Summary	37
3.2 Distance from Labour Market	42
3.3 Demographics	43
3.4 Geographic Analysis	48
4.0 Alignment to the UKSPF Programme	52
5.0 Project Long List Assessment	56

Appendices

Appendix A - Lessons Learnt

Foreword

Leicester City Council has commissioned Focus Consultants 2010 LLP to undertake this independent assessment of a range of EU and CRF funded projects across the city. We are grateful to all of the participating organisations for providing information to inform the analysis, and for engaging positively with Focus to assist their work.

Note that the purpose of the assessment has not been to pass judgement on the effectiveness or reach of any specific project, merely to comment on the potential fit with the objectives of the UK Shared Prosperity Fund (UKSPF). It has been useful to understand the range of activities being delivered, which projects have been reaching different sections of the community, and to help identify where we have much or little provision.

It is also important to note that the views expressed do not determine which projects may ultimately receive UKSPF funding. This independent assessment will be considered by Leicester City Council in the design of the commissioning and delivery approach for Leicester's UKSPF programme.

1.0 Introduction

In December 2022, Focus Consultants 2010 LLP was appointed by Leicester City Council to undertake an independent evaluation of a selection of EU- and CRF-funded projects. The evaluation involves a desk-based evaluation of project performance, plus telephone and face to face interviews with project representatives where appropriate.

Focus has taken every care to conduct the study professionally, openly, and thoroughly, to retain an objective stance, to balance the opinions expressed and explore the justification for the comments made.

As outlined in the brief, the evaluation includes:

- Review of relevant statistical data on needs and opportunities in Leicester.
- Evaluation of existing EU and Community Renewal Funded projects operating in the Leicester area which deliver either business support or employment and skills or both.
- Analysis of project alignment to the priorities and focus of the new UKSPF programme.
- Identification of best practice from current activities.
- Options analysis for potential activities that could be procured/commissioned.

The city had several Community Renewal Fund projects that offering vital support services to those who are unemployed and economically inactive. This provision ceased in the end of summer 2022 with the end of CRF funding.

Between March 2023 and December 2023, the City will begin to see gaps emerge as ESIF projects delivering across Leicester and Leicestershire will begin to wind down. ESIF funded support for businesses and individuals with multiple and complex needs (e.g., health, homelessness, debt management) will end in June 2023, with universal employment support for job seekers and businesses ceasing in December 2023. It should be acknowledged that CRF and ESF projects have been delivered over different timescales, with prior marketing and engagement strategies varying from project-to-project, although ESF projects were more likely to benefit from additional resource and lead-in time. It is important that CRF and ESF projects are considered in this context.

A key consideration in the design of Leicester's SPF programme therefore is to undertake a local assessment of the key benefits / achievements of these projects to be used to inform the commissioning of future activities. As the objectives and criteria of the previous ESF programme and UKSPF differ, the evaluation will aim to demonstrate which projects have the potential to make the greatest difference to local communities whilst addressing the SPF's focus on business, community and skills, including a new spotlight on the economically inactive.

Organisations were invited to submit Information Templates about their project in relation to the Leicester UK Shared Prosperity Fund. Projects were asked to provide a breakdown of their beneficiaries and activities to inform the evaluation. It should be acknowledged that the evaluation is based on the data provided at the time only, supplemented by project representatives where possible; although some projects have completed, others have a few months of delivery remaining.

2.0 Economic Baseline

This section looks at the following data sets as a means of providing an evidence base for the potential interventions and activities designed through the UKSPF programme.

- Population
- Economic inactivity, employment and unemployment
- Resident wages
- English language proficiency
- Skills and qualifications, including digital and internet
- Graduate retention
- Business sizes and sectors
- Employment by sector
- Productivity
- Business start-up rates and survival rates.

Sources: Leicester Annual Economic Profile 2022, ONS Annual Population Survey, ONS Claimant Count, ONS UK Business Counts, BVD Fame, ONS Annual Survey of Hours & Earnings, ONS Population Estimates, Longitudinal Small Business Survey 2021, Census 2021, Leicester Health and Wellbeing survey 2018, LLEP Business Tracker Survey 2022.

2.1 Population, Economic Activity and Skills - Highlights

The baseline data demonstrates that some of the biggest challenges facing people within Leicester's communities today are economic, driven by high levels of unemployment, access to in demand skills, low pay, low levels of disposable household income and in some cases a lack of opportunity.

Population

- **13.1%** of Leicester's working age population is **18-24 years old**. In England the figure is 8.9%. Leicester has on average a younger population, in part due to being home to 2 universities with a resultant large student population. There is a high proportion of young people and key to improving life chances of young people will be enabling the linking / successful transition from school into post 16 employment and training, from college to university or employment, and from university to employment.
- **Leicester's population** has increased by 36,391 people between 2011 and 2021. This **11% increase** exceeds the regional (7.6%) and national (6.5%) averages, and represents greater growth than in other regional cities including Derby (4.9%), Nottingham (5.2%) and Birmingham (6.3%).
- There is a higher proportion of residents who identify as being **disabled and limited a lot** in Leicester (**8.8%**) than nationally (7.5%).

Employment

- Employment in Leicester has grown from 158,000 in 2011 to 174,000 in 2019, a rise of 10.1%. Over the same period employment grew in England by 12.8%, across Leicester and Leicestershire by 13.7% and in Leicestershire by 15.7%. This represents a marked difference in terms of growth for the city.
- The local employment rate has historically lagged behind the national rate and continues to do so with employment rates in Leicester standing at 65.6%, compared to a national average of 75.7%.
- Employment amongst women is much lower (59.2%) than it is for men (79.2%) in the city.
- The latest unemployment figure is 5.6% which is higher than the national average (3.8%) and the average across Leicestershire (2.2%). The unemployment rate in Leicester has traditionally been above the national average.
- Leicester's unemployment claimant count (4.7%) also sits above the national average (3.7%).
- Youth unemployment has increase by c.25% in Leicester East, Leicester South and Leicester West, around 3x the regional average.
- Unemployment amongst those aged 50+ has increased by c.70% in Leicester East (nearly 4x the regional average), and by c.40% in Leicester West and Leicester South (nearly x2 the regional average). Unemployment has grown at a higher rate in these hotspots amongst those aged 50+ (average 50.1%) than other age bands (average 26.7% for 18-24yrs and 46.9% for 25-49yrs respectively).
- The rate of employment (economic activity excluding full-time students) is lowest amongst Leicester's Chinese (29.6%), Gypsy or Irish Traveller (34.3%) and Arab (34.6%) populations.
- The rate of employment is highest amongst the city's White (68.0%), Indian (62.3%) and Other Asian (51.1%) populations.
- The greatest gender imbalance in the employment rates in Leicester exist within the Bangladeshi (13.6% gap), Roma (12.265), Any other ethnic group (11.3%) and Pakistani (11.1% gap) populations.

Economic Activity

- Consequently, Leicester's economically inactive population is 30.5%, considerably higher than the 21.3% national average. This should be a key area of focus for Leicester's UKSPF programme.
- Of the male working age population 22.4% were economically inactive. Of the female working age population 37.7% were inactive.
- The share of economically inactive residents who want a job is lower in Leicester (13.8%) people than the national average (18.4%) – equating to 15,405 people. Most economically inactive residents in the city are students (40.5%) or looking after family/home (26.1%).

Equality Data

Economic inactivity rates illustrate a significant gender imbalance – adult women are proportionately much more likely to be economically inactive. A distinctive feature of Leicester's labour market is the gender imbalance regarding economic participation – the UKSPF programme needs to provide viable interventions that can target such an imbalance.

- Leicester's population is very diverse and therefore targeted approaches will be required.
- The DWP State of Group report (May 2022) identifies Leicester East as a particular hotspot having a 93% increase in claimants aged 50+, which is likely to reflect the high South Asian population.
- This report also shows that all three of Leicester's parliamentary constituencies (Leicester East, South and West) are within the top 20 of all DWP Youth Hotspots within the North and East Midlands Region. For over 50's whilst the numbers are lower compared to those under 25, Leicester East, West and South are within the top 10 highest hotspots for those aged 50+.
- Economic inactivity includes those looking after the home or family. This is most prevalent in Bangladeshi (20.5%), Arab (17.5%), Gypsy or Irish Traveller (17.3%) and Pakistani (15.9%) communities, in which the role is dominated by women.
- Economic inactivity is also attributed to those defined as long-term sick or disabled. This is highest amongst Gypsy or Irish Traveller (13.8%); White and Black Caribbean (9.3%), and White: English, Welsh, Scottish, Northern Irish or British (8.8%) populations.
- There are huge disparities in the proportion of students across different ethnic groups. Whereas the majority of Leicester's Chinese population are students (52.9%), comparatively few of the city's Gypsy or Irish Traveller (6.0%), Roma (6.4%), Indian (9.2%) or Irish (10.3%) populations are also students.

Earnings

- Resident earnings in the Leicester area are £27,661, 16.7% below the national average.
- Female resident earnings in the area are 11% below the same annual figure for men.

Skills

- The city's graduate retention rate (28.0%) falls far below the national figure (48.4%).
- 11,000 (17.8%) of Leicester's 62,000 students are from non-EU countries (East Midlands Chamber HE Enrolments Dashboard 2022).
- Leicester is home to twice the proportion of people with no qualifications (12.0%) than the national average (6.4%).
- In Leicester those with an NVQ1+ make up 78.4% of the working age population. This is below the national average (87.7%) by 9.1%. Moreover, just 70.7% of people have NVQ2+ compared to 78.1% nationally, a gap of 7.4%.
- Almost half (48%) of small business owners say that technical skills are important to achieving future growth.
- Leicester's NEET population stands at 7.1%. The greatest proportion of NEET individuals are those with SEND; ex-offenders, caring responsibilities; troubled families; teenage parents; people with mental health needs or a combination of these factors.
- 24.1% of Leicester's population specify a non-UK identity only – compared with just 10.0% nationally), reflecting the number of people who have settled in the city from abroad. This has increase by 6.3% in the last 10 years, far exceeding the national average over the same period (1.8%).
- Subsequently, 7.0% of the population cannot speak English, ranking Leicester 3rd out of 331 Local Authorities.

- Regarding digital skills, just 91% of the population of East Midlands have the 5 basic skills, leaving the region ranked last; 9% of the same population have no digital skills whatsoever.
- In Leicester, 95% of households have access to the internet. Black (30%) and Asian (20%) households are identified as those with the most people who would benefit from support or training in how to access services or carry out transactions online. The 18-25 age band (20%) is similarly identified as the band with the most people who would benefit from such support.

Leicester's population growth is driven by people who born outside of the UK; there is a need for the city to provide skills support to prevent the incoming population from being exploited with undervalued, underpaid work. The skills offer needs to include provision for moving people away from vulnerability, for supporting basic skills levels to help people into work, and for supporting those in work to improve skills to progress. Although the city would benefit from higher level skills and better paid work, the city has been plagued by lower-level skills deficits for decades.

Leicester also has a high rate of low-level skills, which impacts certain sectors (such as textiles) that are characterised by lower qualifications. The LLEP Skills Evidence Base Summary (2020) identifies education, information and communication and construction as the employment sectors with the largest skills gaps. The LLEP has a larger skills gap than the national figure for 'Hotels and Restaurants', 'Health and Social Work', 'Manufacturing' and 'Transport and Storage'.

Money, Debt and Advice

- While 69% of Leicester residents reported "hardly ever/never running out of money before the end of the week or month", this was considerably different for vulnerable groups. Of the residents who did not work because of sickness/disability, 39% reported running out of money by the end of the month, a huge contrast from the overall figures. Lloyds Banking Group show that 80% of people nationally reported having money left after paying for essentials, suggesting that Leicester residents are less financially secure.
- Figures nationally for over-indebtedness stand at 17.2%, and at 18.0% for the East Midlands. For Leicester, the figure is higher once again, at 23.4%. Of 40 local government districts in the East Midlands, Leicester ranks 8th for the highest proportional unmet demand for face-to face debt advice.
- Out of work households are becoming worse off, and further from the Minimum Income Standard. In 2008, benefits provided 42% of the required household budget for a single person of working age. Now, they cover less than 32%. This figure for families is even more stark – a couple with two children, who are reliant on benefits, have only 56% of what they need.
- Regarding Universal Credit, 85.3% of new UC claims are paid in full on time nationally, whereas in Leicester this figure is 78.7%.

2.2 Business Base - Highlights

There are 14,590 enterprises in Leicester. Leicester's business base is primarily made up of small/medium businesses. Any support interventions need to deliver targeted interventions that reflect the diversity of the business base. Leicester has a strong track record of business start-ups, and in 2020 was ranked the 2nd most entrepreneurial city in the UK, but there is a need to focus on improving business survival rates.

Business Sectors

- The majority of businesses in Leicester (89.2%) were micro businesses (less than 10 staff).
- In terms of business numbers the broad industry areas in Leicester with the largest share of businesses are Wholesale (11.4%), Retail (11.1%), Professional, Scientific and Technical (9.0%), and Manufacturing (8.7%).
- When comparing local to national figures there are some notable areas that differentiate the local area from the average. There are on average a larger share of Business Administration and Support Services, Financial and Insurance, Manufacturing, Retail, Transport and Storage and Wholesale.
- There is a smaller share of Arts, Entertainment and Recreation, Construction, Information and Communication and Professional, Scientific and Technical businesses.
- The sectors with the highest employment numbers in Leicester are: Health (18.5%), Education (13.7%), Manufacturing (10.1%), and Retail (8.9%).
- In the case of the sectors that differentiate the area there are 20 that have a location quotient greater than 1. The largest of these are Manufacturing of Wearing Apparel (18.0) and Manufacture of Textiles (12.0). On average the local Textiles industry is large in the area when compared to England, this however may not necessarily translate to large employment numbers.
- There is also a higher-than-average employment share for the Manufacture of Food Products sector (3.0).
- The share of Process, Plant and Machine Operatives (13.5%) and Elementary Occupations (10.9%) in Leicester are significantly higher than average when compared with figures for England.
- There is also a higher share of Caring, Leisure and Other Service Occupations (10.9%). These broad occupation areas are seen as areas that are less well paid.
- The Top Jobs advertised in Leicester are Support Workers, Warehouse Operatives and Teaching Assistants.

Business Start-up and Survival

- 2021 figures demonstrate that there were more business deaths than births.
- The business birth rate in Leicester (15.0%) is higher than both the regional (12.4%) and national (13.5%) rates. However, the city's business death rate (16.0%) is much higher than both the regional (11.4%) and national (12.1%) rates. In particular, Leicester's 5 years survival rate (35.6%) falls below the average for England (38.0%).

Business Ownership*

- In 2021, just 19% of SMEs in England were led by women.
- Regarding sole ownership, 84% of SMEs in England are owned by White British.
- 87% of SMEs in England have no directors/owners from ethnic groups.

**Business ownership data via the Small Business Survey is available at a national level only.*

Business Recruitment Needs

- 3 in 10 LLEP businesses would like support for business planning and growth and recruitment.
- Around two fifths (38%) of businesses have experienced difficulties with recruitment in the last 6 months; recruitment challenges were identified as a lack of applicants with the required skills (21%), lack of relevant work experience (21%), and a lack of relevant qualifications (14%).
- 78% of small firms in England have struggled to recruit in the past 12 months.
- Two thirds (67%) of businesses do not employ anybody from the rest of the world (outside of EU and UK). 5% of businesses have more people on their payroll from the rest of the world than a year ago. This maybe a product of a shortage of domestic labour and easing travel restrictions compared with previous waves.
- Around a third (34%) of businesses that have hired someone for their first job after leaving school/ college/ university in the last 2-3 years thought those recruited were poorly prepared for work.
- Over two-fifths (42%) of businesses have some capacity to offer work experience placements.
- The majority of businesses plan future investment in recruitment over a 6-24 months timescale, although approximately a third plan over a 0-6 months timescale. Very few plan over 24 months in advance (Insight Unlocked Business Survey 2022).

Business Skills Needs

- Over a third of businesses would like support with finance and funding (36%), training their workforce and skills (35%), and digital skills (35%).
- Two thirds (66%) of businesses in the LLEP area saw some need for improved work-based skills (this is higher than in all previous waves).
- 71% of businesses identified a technical or job specific skills they would like to see improved; the greatest requirement is for job specific practical skills (34%). Around a quarter (24%) of businesses would like to see marketing or sales skills improved.
- 74% of businesses agree that they want to grow the use of digital technology. While the majority of businesses have an online presence, 27% only update content on an irregular basis.
- Three out of ten (30%) organisations were happy with their workforce's basic skills – this is the lowest level recorded. The main area of concern remains Digital skills – such as social media, Zoom, MS Teams, Slack – this is a concern for nearly half (45%) of businesses. This wave shows a growth in those who would like to see an improvement in General IT user skills (now 32%) after an apparent decline during previous waves.
- The Top Skills advertised in Leicester are Communications, Management and Customer Service.

Note: Leicester Open Data and Census 2021

Leicester City Council's Open Data site allows for the exploration, analysis and sharing of data about the city. Most of the data has been published by Leicester City Council. The non-personal information is available to download and is free to use in accessible, machine-readable formats. The below link can be used to download datasets on suppliers and contracts, transactions, equalities information, staff and other areas, including:

- City & Governance
- Population & Communities
- Environment & Energy
- Public Safety & Wellbeing
- Parking & Mobility
- Places & Maps
- Business & Economy
- Building & Infrastructure
- Transport

[Home – Leicester Open Data](#)

<https://data.leicester.gov.uk/pages/home/>

The link below also allows users to examine Census 2021 data by area, including Leicester:

[Build a custom area profile - Census 2021, ONS](#)

Economic Baseline					
			East Midlands	Leicestershire	Leicester
Key Statistics		England Baseline	Regional Area	County Area	District Area
Population, Economic Activity and Skills					
Population <i>Labour Market Profile 2021 - Leicester, Leicestershire, East Midlands</i> <i>ONS Annual Population Survey</i> <i>Census 2021</i> <i>ONS Population Estimates</i>	Total Resident Population	56,550,100	4,880,100	712,600	366,000
	Men	27,682,300	2,402,000	351,500	181,100 (49.5%)
	Women	28,854,100	2,478,100	361,100	185,000 (50.5%)
	Increase in Population 2011-2021	+3.4m (6.5%)	+342,646 (7.6%)	-	+36,391 (11.0%)
	% of Working Age Population 16-64	63.0%	62.3%	61.6%	245,200 (67.0%)
	Number of Population Aged 18-24	8.9%	8.7%	8.3%	47,900 (13.1%)
	Number of Population Aged 50+	40.0%	39.7%	41.6%	102,600 (28.0%)
	% of Population who specify a non-UK identity only	10.0%	8.5%	-	24.1%
	% change 2011-2021	1.8%	2.7%	-	6.3%
	% of Residents who identify as being disabled and limited a lot	7.5%	7.7%	-	8.8%
Economic Activity <i>Employed, self-employed or unemployed</i> <i>ONS Annual Population Survey 2021</i> <i>Leicester Unemployment Dashboard</i>	% of People Economically Active	78.7%	77.8%	82.7%	69.5% (171,100)
	Men	82.6%	81.4%	84.8%	77.6% (89,600)
	Women	74.8%	74.3%	80.5%	62.3% (81,600)
	Employment Rate In Employment	75.7%	75.5%	80.8%	65.6% (161,900)
	Men	79.4%	79.1%	84.1%	72.9% (84,300)
	Women	72.0%	71.9%	77.3%	59.2% (77,600)
	Ethnic minority	69.0%	71.2%	79.0%	61.1% (72,900)
	Unemployment Rate (16-64)	3.8%	3.0%	2.2%	5.6% (9,200)
	Men	3.8%	2.8%	/	6.1% (5,300)
	Women	3.8%	3.3%	3.9%	5.0% (3,900)
	Ethnic minority	6.6%	5.4%	3.8%	8.5% (7,000)
	Unemployment Claimant Count (2023)	3.7%	4.7%	2.2%	4.7% (11,525)
	% of Economically Inactive People	21.3%	22.2%	17.3%	30.5% (72,500)
	Men	17.4%	18.6%	15.2%	22.4% (25,200)
	Women	25.2%	25.7%	19.5%	37.7% (47,300)
	Ethnic minority	26.1%	24.7%	18.6%	33.0% (39,400)
	Student	26.6%	26.5%	34.5%	40.5% (29,400)
	Looking After Family/Home	19.6%	18.4%	23.6%	26.1% (18,900)
	Temporary Sick	2.2%	1.9%	4.1%	5.0% (3,600)
	Long-Term Sick	25.5%	26.0%	18.9%	14.0% (10,200)
Retired	14.1%	16.2%	10.9%	7.3% (5,300)	
Other	11.8%	10.7%	8.1%	7.0% (5,100)	
% of economically inactive people who want a Job	18.4%	16.7%	16.0%	13.8% (10,000)	
% of economically inactive people who don't want a Job	81.6%	83.3%	84.0%	86.2% (62,500)	

Economic Baseline					
			East Midlands	Leicestershire	Leicester
Key Statistics		England Baseline	Regional Area	County Area	District Area
	Claimant Count including JSA, UC Searching for Work, and Additionals	-	-	-	4.7% (11,445)
Resident Wages – Median Annual Gross Pay (2022 – Full time workers)	Total	£33,208	£30,900	£33,025	£27,661
	Men	£35,658	£33,287	£34,661	£28,939
	Women	£29,699	£27,247	£28,862	£25,277
Level of Skills <i>ONS Annual Population Survey 2021</i> <i>FSB – Scaling Up Skills</i>	NVQ Level 4 (or equivalent) and above	43.2%	35.7%	40.7%	35.3%
	NVQ Level 3 (or equivalent) and above	61.4%	55.9%	62.4%	54.9%
	NVQ Level 2 (or equivalent) and above	78.1%	74.7%	81.6%	70.7%
	NVQ Level 1 (or equivalent) and above	87.7%	86.5%	90.5%	78.4%
	No qualifications	6.4%	7.5%	6.0%	12.0%
	% of small business owners who think that technical skills are important to achieving future growth	48%	-	-	-
Graduate Retention Rate <i>Leicester Student Voice Report (2017)</i>	% of Graduates who stayed to live and work locally	48.4%	-	-	28.0%
Young People Not in Education, Employment and Training (NEET) <i>DfE Activity Survey (December 2022)</i>	NEET Rate	-	-	-	4.8%
	Unknown	-	-	-	2.2%
	NEET/Unknown	-	-	-	7.1%
English Language Proficiency % of usual residents who do not identify English as their main language <i>ONS Census 2021</i>	Can speak English very well	43.9%	38.9%	49.4%	33.9%
	Can speak English well	35.8%	37.8%	33.9%	36.1%
	Cannot speak English well	17.1%	19.2%	14.2%	23.0%
	Cannot speak English (out of 331 Local Authorities)	3.1%	4.1%	2.4%	7.0% (3 rd highest)
Digital <i>ONS Census 2019</i>	% of Population who are not internet users (out of 9 regions)	-	11.5% (3 rd)	-	-
	% of Population who have the 5 basic digital skills (out of 9 regions)	-	71% (tied 9 th)	-	-
	% of Population with no digital skills whatsoever (out of 9 regions)	-	9% (3 rd highest)	-	-
Internet Access <i>Leicester Household Survey 2021</i>	% of Households with access to the internet	-	-	-	95%
	White	-	-	-	94%
	Black	-	-	-	96%
	Asian	-	-	-	95%
	% of Households who would benefit from support or training in how to access services or carry out transactions online	-	-	-	17%
	White	-	-	-	9%
	Black	-	-	-	30%

Economic Baseline					
			East Midlands	Leicestershire	Leicester
Key Statistics		England Baseline	Regional Area	County Area	District Area
	Asian	-	-	-	25%
	Age 18-25	-	-	-	20%
	Age 26 – 35	-	-	-	15%
	Age 36 – 45	-	-	-	18%
	Age 46 - 55	-	-	-	18%
	Age 56 – 65	-	-	-	13%
	Age 66+	-	-	-	15%
Business Base					
Business Size	Micro (0 to 9 employees)	89.6%	89.3%	89.2%	13,025 (89.2%)
<i>Enterprises – UK Business Counts 2022</i>	Small (10 to 49 employees)	8.5%	8.7%	8.7%	1,300 (8.9%)
	Medium (50 to 249 employees)	1.5%	1.5%	1.6%	215 (1.5%)
	Large (250+ employees)	0.4%	0.4%	0.4%	50 (0.3%)
<i>Inter Departmental Business Register (ONS)</i>					
Businesses by Sector	Agriculture, forestry and fishing	3.9%	5.5%	5.6%	0.1%
	Mining, quarrying and utilities	0.5%	0.5%	0.6%	0.3%
	Manufacturing	4.9%	6.4%	6.9%	8.7%
	Construction	13.6%	13.6%	14.0%	6.6%
	Motor trades	2.9%	3.7%	3.5%	3.6%
	Wholesale	4.0%	4.8%	5.1%	11.4%
	Retail	8.1%	8.5%	7.0%	11.1%
	Transport and storage	5.1%	6.9%	5.5%	8.1%
	Accommodation and food services	6.1%	6.1%	5.2%	6.5%
	Information and communication	7.5%	4.6%	4.9%	4.7%
	Finance and insurance	2.3%	2.6%	3.1%	7.9%
	Property	4.1%	3.7%	4.0%	5.0%
	Professional, scientific and technical	16.1%	12.7%	14.6%	9.0%
	Business admin and support services	8.5%	7.7%	7.9%	6.1%
	Public administration and defence	0.3%	0.5%	0.5%	0.0%
	Education	1.8%	1.7%	1.9%	1.3%
	Health	3.8%	3.8%	3.7%	5.0%
Arts, entertainment, recreation etc.	6.5%	6.7%	5.9%	4.6%	
Business Ownership	% of SMEs led by women	19.0%	-	-	-
	% of SMEs owned by White British	84.0%	-	-	-
	% of SMEs with no directors/owners from ethnic groups	87.0%	-	-	-
<i>Small Business Survey</i>					
Employment by Sector	Agriculture, forestry and fishing	1.3%	1.7%	1.8%	0.0%
	Mining, quarrying and utilities	1.1%	1.5%	2.4%	0.9%
	Manufacturing	7.5%	11.9%	12.8%	17,000 (10.3%)
	<i>Manufacture of food products</i>	1.2%	2.5%	2.2%	6,000 (3.6%)
<i>Business Register and Employment Survey 2021</i>					

Economic Baseline					
			East Midlands	Leicestershire	Leicester
Key Statistics		England Baseline	Regional Area	County Area	District Area
	<i>Manufacture of textiles</i>	0.2%	0.2%	0.1%	600 (0.4%)
	<i>Manufacture of wearing apparel</i>	0.1%	0.2%	0.1%	2,250 (1.4%)
	Construction	4.9%	4.9%	5.4%	2.7%
	Motor trades	1.7%	2.5%	2.4%	2.1%
	Wholesale	3.6%	4.3%	4.8%	4.2%
	Retail	9.0%	9.4%	8.7%	8.9%
	Transport and storage	5.2%	6.4%	10.2%	2.7%
	Accommodation and food services	7.4%	6.6%	6.0%	5.4%
	Information and communication	4.5%	2.9%	3.0%	2.7%
	Finance and insurance	3.6%	1.8%	2.1%	3.0%
	Property	2.0%	1.5%	1.5%	1.5%
	Professional, scientific and technical	9.3%	7.0%	10.5%	6.0%
	Business admin and support services	8.9%	7.9%	7.2%	8.3%
	Public administration and defence	4.1%	3.9%	3.0%	5.4%
	Education	8.5%	8.5%	7.8%	13.7%
	Health	13.1%	13.3%	6.9%	18.5%
	Arts, entertainment, recreation etc.	4.3%	4.4%	4.2%	4.8%
Recruitment Challenges					
	<i>Scaling Up Skills</i>	% of small firms who have struggled to recruit in the past 12 months	78%	-	-
Business Survival					
	<i>Business Register and Employment Survey 2021</i>				
	Businesses (UK Business Count 2021)	2,405,965	188,925	30,230	15,925
	Business Births (2021)	324,485 (13.5%)	23,370 (12.4%)	3,275 (10.8%)	2,400 (15.0%)
	Business Deaths (2021)	290,335 (12.1%)	21,530 (11.4%)	3,455 (11.4%)	2,555 (16.0%)
	1 Year Survival Rate (from 2020)	92.9%	94.7%	94.2%	96.7%
	3 Year Survival Rate (from 2018)	57.5%	59.8%	62.2%	57.0%
	5 Year Survival Rate (from 2016)	38.0%	39.6%	35.3%	35.6%
Productivity					
	<i>ONS 2020</i>				
	GVA per filled job (2020)	£58,995	£49,480	£51,687	£50,195

Leicester Jobs and Skills Advertised		
Key Statistics		Leicester
Top Jobs Advertised <i>Collective Intelligence Skills Observatory</i>	Support Workers	892
	Warehouse Operatives	595
	Teaching Assistants	547
	Customer Service Advisors	510
	Recruitment Consultants	408
	Administrators	404
	Cleaners	394
	Production Operatives	359
	Health Care Assistants	339
Top Skills Advertised <i>Collective Intelligence Skills Observatory</i>	Communications	23,666
	Management	15,270
	Customer Service	14,822
	Sales	10,289
	Detail Orientated	7,574
	Planning	6,474
	Teaching	6,123
	Leadership	6,061
	Enthusiasm	4,527
Self-Motivation	4,324	

Leicester Unemployment					
Key Statistics		North and East Midlands	Leicester West	Leicester South	Leicester East
Youth Unemployment Hotspots	% Change in Claimant Count ages 18-24, March 2020 to December 2022	8.6%	26.4% (+165) = 790	25.2% (+ 145) = 720	28.4% (+ 105) = 475
Unemployment Hotspots (Aged 25-49)	% Change in Claimant Count ages 25-49, March 2020 to December 2022	26.6%	42.8% (+ 760) = 2,535	50.0% (+ 815) = 2,445	47.9% (+ 575) = 1,775
Unemployment Hotspots (Aged 50+)	% Change in Claimant Count ages 50+, March 2020 to December 2022	18.8%	40.7% (+ 400) = 975	40.0% (+ 270) = 945	69.6% (+ 240) = 830
<i>ONS Claimant Count 2022</i>					

Equality Data			Leicester (%)
Key Statistics	Ethnic Group	%	
Population <i>ONS Population Survey 2022</i>	% of Population aged 16+	Mixed ethnic group	2.8% (7,900)
		Indian	27.1% (76,400)
		Pakistani/Bangladeshi	5.5% (15,400)
		Black or Black British	6.4% (18,100)
		Other ethnic group	7.4% (20,700)
	% of Population aged 16-64	Mixed ethnic group	3.1% (7,300)
		Indian	25.9% (61,600)
		Pakistani/Bangladeshi	6.2% (14,900)
		Black or Black British	6.4% (15,300)
		Other ethnic group	8.6% (20,400)
Population Origin <i>Leicester Household Survey 2021</i>	% of Population who have lived in Leicester for less than 5 years who are from Outside of the UK	Leicester	53%
		Asian	64%
		White	33%
		Black	60%
Employment Rate <i>Employment Rate by Ethnicity</i>	Overall Employment Rate (aged 16-64yrs)	White	70.0% (80,400)
		Ethnic Minority	61.1% (72,900)
		Mixed ethnic group	36.2% (2,600)
		Indian	66.6% (41,000)
		Pakistani/Bangladeshi	60.4% (9,000)
		Black or Black British	60.3% (9,200)
		Other ethnic group	54.3% (11,100)
	Employment Rate Male (aged 16-64yrs)	White	74.0% (39,600)
		Ethnic Minority	70.8% (40,200)
		Mixed ethnic group	54.2%
		Indian	85.6% (22,500)
		Pakistani/Bangladeshi	67.1% (6,100)
		Black or Black British	58.9% (4,800)
		Other ethnic group	61.2% (6,200)
	Employment Rate Female (aged 16-64yrs)	White	66.5% (40,800)
		Ethnic Minority	52.3% (32,700)
		Mixed ethnic group	49.4% (2,200)
		Indian	52.4% (18,500)
		Pakistani/Bangladeshi	49.8% (2,800)
		Black or Black British	61.9% (4,400)
		Other ethnic group	47.6% (4,900)
Unemployment <i>Unemployment Rate by Ethnicity</i>	Overall Unemployment Rate (16+)	White	2.6% (2,200)
		Ethnic Minority	8.5% (7,000)
		Indian	6.2% (2,800)

Equality Data				
			Leicester (%)	
Key Statistics	Ethnic Group		%	
<i>ONS Annual Population Survey 2021</i>	Unemployment Rate Male (16+)	White	4.4% (1,900)	
		Ethnic Minority	7.6% (3,400)	
		Indian	5.1% (1,300)	
	Unemployment Rate Female (16+)	White	-	
		Ethnic Minority	9.6% (3,600)	
		Indian	7.5% (1,500)	
Economically Active: In Employment <i>Census 2021</i>	% of Overall Population (excluding full-time students) Economically Active: In Employment	Asian, Asian British or Asian Welsh: Bangladeshi	45.5% (2,126)	
		Asian, Asian British or Asian Welsh: Chinese	29.6% (627)	
		Asian, Asian British or Asian Welsh: Indian	62.3% (53,593)	
		Asian, Asian British or Asian Welsh: Other	51.1% (3,808)	
		Asian, Asian British or Asian Welsh: Pakistani	48.1% (3,995)	
		Black, Black British, Black Welsh, Caribbean or African: African	44.7% (6,898)	
		Black, Black British, Black Welsh, Caribbean or African: Caribbean	51.8% (1,634)	
		Black, Black British, Black Welsh, Caribbean or African: Other Black	42.4% (612)	
		Mixed or Multiple ethnic groups: Other	47.8% (862)	
		Mixed or Multiple ethnic groups: White and Asian	45.9% (868)	
		Mixed or Multiple ethnic groups: White and Black African	45.1% (401)	
		Mixed or Multiple ethnic groups: White and Black Caribbean	45.3% (1,354)	
		Other ethnic group: Any other ethnic group	53.6% (4,217)	
		Other ethnic group: Arab	34.6% (727)	
		White: English, Welsh, Scottish, Northern Irish or British	57.4% (45,637)	
		White: Gypsy or Irish Traveller	34.3% (97)	
		White: Irish	62.5% (655)	
		White: Other White	68.0% (13,582)	
		White: Roma	64.2% (403)	
		Total	57.4% (142,096)	
		% of Male Population (excluding full-time students) Economically Active: In Employment	Asian, Asian British or Asian Welsh: Bangladeshi	30.9% (1,445)
			Asian, Asian British or Asian Welsh: Chinese	14.1% (299)
			Asian, Asian British or Asian Welsh: Indian	34.8% (29,882)
			Asian, Asian British or Asian Welsh: Other	30.9% (2,301)
Asian, Asian British or Asian Welsh: Pakistani	29.6% (2,456)			

Equality Data		
		Leicester (%)
Key Statistics	Ethnic Group	%
% of Female Population (excluding full-time students) Economically Active: In Employment	Black, Black British, Black Welsh, Caribbean or African: African	22.8% (3,517)
	Black, Black British, Black Welsh, Caribbean or African: Caribbean	24.9% (786)
	Black, Black British, Black Welsh, Caribbean or African: Other Black	22.1% (318)
	Mixed or Multiple ethnic groups: Other Mixed or Multiple ethnic groups	24.3% (438)
	Mixed or Multiple ethnic groups: White and Asian	24.0% (453)
	Mixed or Multiple ethnic groups: White and Black African	26.7% (238)
	Mixed or Multiple ethnic groups: White and Black Caribbean	21.1% (629)
	Other ethnic group: Any other ethnic group	32.5% (2,553)
	Other ethnic group: Arab	23.6% (497)
	White: English, Welsh, Scottish, Northern Irish or British	30.0% (2,381)
	White: Gypsy or Irish Traveller	19.8% (56)
	White: Irish	34.7% (364)
	White: Other White	35.4% (7,080)
	White: Roma	38.2% (240)
	Total	31.3% (77,363)
	Asian, Asian British or Asian Welsh: Bangladeshi	14.6% (681)
	Asian, Asian British or Asian Welsh: Chinese	15.5% (328)
	Asian, Asian British or Asian Welsh: Indian	27.6% (23,711)
	Asian, Asian British or Asian Welsh: Other	20.1% (1,507)
	Asian, Asian British or Asian Welsh: Pakistani	18.6% (1,539)
	Black, Black British, Black Welsh, Caribbean or African: African	21.9% (3,381)
	Black, Black British, Black Welsh, Caribbean or African: Caribbean	26.9% (848)
	Black, Black British, Black Welsh, Caribbean or African: Other Black	20.4% (294)
	Mixed or Multiple ethnic groups: Other Mixed or Multiple ethnic groups	23.5% (424)
	Mixed or Multiple ethnic groups: White and Asian	22.0% (415)
	Mixed or Multiple ethnic groups: White and Black African	18.3% (163)
	Mixed or Multiple ethnic groups: White and Black Caribbean	24.2% (725)
Other ethnic group: Any other ethnic group	21.2% (1,664)	
Other ethnic group: Arab	10.9% (230)	

Equality Data		
		Leicester (%)
Key Statistics	Ethnic Group	%
<p>Economically Active: Unemployed: Seeking work</p> <p><i>Census 2021</i></p>	White: English, Welsh, Scottish, Northern Irish or British	27.5% (21,826)
	White: Gypsy or Irish Traveller	14.5% (41)
	White: Irish	27.8% (291)
	White: Other White	32.5% (6,502)
	White: Roma	26.0% (163)
	Total	26.2% (64,733)
	Asian, Asian British or Asian Welsh: Bangladeshi	4.5% (209)
	Asian, Asian British or Asian Welsh: Chinese	2.0% (42)
	Asian, Asian British or Asian Welsh: Indian	3.6% (3,096)
	Asian, Asian British or Asian Welsh: Other	3.9% (289)
	Asian, Asian British or Asian Welsh: Pakistani	4.3% (355)
	Black, Black British, Black Welsh, Caribbean or African: African	5.3% (823)
	Black, Black British, Black Welsh, Caribbean or African: Caribbean	7.1% (224)
	Black, Black British, Black Welsh, Caribbean or African: Other Black	6.2% (89)
	Mixed or Multiple ethnic groups: Other Mixed or Multiple ethnic groups	5.9% (107)
	Mixed or Multiple ethnic groups: White and Asian	4.8% (91)
	Mixed or Multiple ethnic groups: White and Black African	5.2% (46)
	Mixed or Multiple ethnic groups: White and Black Caribbean	6.9% (205)
	Other ethnic group: Any other ethnic group	4.9% (385)
	Other ethnic group: Arab	5.0% (106)
	White: English, Welsh, Scottish, Northern Irish or British	4.2% (3,323)
White: Gypsy or Irish Traveller	12.4% (35)	
White: Irish	3.5% (37)	
White: Other White	3.7% (744)	
White: Roma	5.9% (37)	
Total	4.1% (10,243)	
<p>% of Male Population who are Economically Active (excluding students) who are Unemployed: Seeking work or waiting to start a job already obtained: Available to start working within 2 weeks</p>	Asian, Asian British or Asian Welsh: Bangladeshi	2.8% (132)
	Asian, Asian British or Asian Welsh: Chinese	1.2% (26)
	Asian, Asian British or Asian Welsh: Indian	2.0% (1,675)
	Asian, Asian British or Asian Welsh: Other	2.1% (159)

Equality Data			
		Leicester (%)	
Key Statistics	Ethnic Group	%	
	Asian, Asian British or Asian Welsh: Pakistani	2.3% (192)	
	Black, Black British, Black Welsh, Caribbean or African: African	3.0% (462)	
	Black, Black British, Black Welsh, Caribbean or African: Caribbean	4.0% (127)	
	Black, Black British, Black Welsh, Caribbean or African: Other Black	3.4% (49)	
	Mixed or Multiple ethnic groups: Other Mixed or Multiple ethnic groups	3.0% (54)	
	Mixed or Multiple ethnic groups: White and Asian	3.0% (57)	
	Mixed or Multiple ethnic groups: White and Black African	3.4% (30)	
	Mixed or Multiple ethnic groups: White and Black Caribbean	4.7% (139)	
	Other ethnic group: Any other ethnic group	2.8% (220)	
	Other ethnic group: Arab	2.9% (61)	
	White: English, Welsh, Scottish, Northern Irish or British	2.7% (2,111)	
	White: Gypsy or Irish Traveller	3.5% (10)	
	White: Irish	2.0% (21)	
	White: Other White	1.6% (313)	
	White: Roma	3.3% (21)	
	Total	2.4% (5,859)	
	% of Female Population who are Economically Active (excluding students) who are Unemployed: Seeking work or waiting to start a job already obtained: Available to start working within 2 weeks	Asian, Asian British or Asian Welsh: Bangladeshi	1.7% (77)
		Asian, Asian British or Asian Welsh: Chinese	0.8% (16)
		Asian, Asian British or Asian Welsh: Indian	1.7% (1,421)
		Asian, Asian British or Asian Welsh: Other	1.7% (130)
		Asian, Asian British or Asian Welsh: Pakistani	2.0% (163)
		Black, Black British, Black Welsh, Caribbean or African: African	2.3% (361)
		Black, Black British, Black Welsh, Caribbean or African: Caribbean	3.1% (97)
		Black, Black British, Black Welsh, Caribbean or African: Other Black	2.8% (40)
		Mixed or Multiple ethnic groups: Other Mixed or Multiple ethnic groups	2.9% (53)
		Mixed or Multiple ethnic groups: White and Asian	1.8% (34)
Mixed or Multiple ethnic groups: White and Black African		1.8% (16)	
Mixed or Multiple ethnic groups: White and Black Caribbean		2.2% (66)	

Equality Data		
		Leicester (%)
Key Statistics	Ethnic Group	%
	Other ethnic group: Any other ethnic group	2.1% (165)
	Other ethnic group: Arab	2.1% (45)
	White: English, Welsh, Scottish, Northern Irish or British	1.5% (1,212)
	White: Gypsy or Irish Traveller	8.8% (25)
	White: Irish	1.5% (16)
	White: Other White	2.2% (431)
	White: Roma	2.6% (16)
	Total	1.8% (4,384)
Economically Active: Full Time Student: In Employment <i>Census 2021</i>	% of Overall Population who are Economically Active and a Full-Time Student: In Employment	
	Asian, Asian British or Asian Welsh: Bangladeshi	3.2% (148)
	Asian, Asian British or Asian Welsh: Chinese	2.6% (56)
	Asian, Asian British or Asian Welsh: Indian	2.5% (2,184)
	Asian, Asian British or Asian Welsh: Other	3.4% (252)
	Asian, Asian British or Asian Welsh: Pakistani	3.7% (308)
	Black, Black British, Black Welsh, Caribbean or African: African	7.5% (1,161)
	Black, Black British, Black Welsh, Caribbean or African: Caribbean	4.1% (129)
	Black, Black British, Black Welsh, Caribbean or African: Other Black	5.6% (81)
	Mixed or Multiple ethnic groups: Other Mixed or Multiple ethnic groups	4.3% (78)
	Mixed or Multiple ethnic groups: White and Asian	5.0% (94)
	Mixed or Multiple ethnic groups: White and Black African	4.9% (44)
	Mixed or Multiple ethnic groups: White and Black Caribbean	4.3% (127)
	Other ethnic group: Any other ethnic group	2.9% (229)
	Other ethnic group: Arab	3.4% (72)
	White: English, Welsh, Scottish, Northern Irish or British	2.9% (2,293)
	White: Gypsy or Irish Traveller	6.0% (17)
	White: Irish	3.1% (32)
	White: Other White	5.4% (1,070)
	White: Roma	1.4% (9)
	Total	3.4% (8,384)
	% of Male Population who are Economically Active and a Full-Time Student: In Employment	Asian, Asian British or Asian Welsh: Bangladeshi

Equality Data		
		Leicester (%)
Key Statistics	Ethnic Group	%
	Asian, Asian British or Asian Welsh: Chinese	1.5% (32)
	Asian, Asian British or Asian Welsh: Indian	1.3% (1,123)
	Asian, Asian British or Asian Welsh: Other	1.8% (131)
	Asian, Asian British or Asian Welsh: Pakistani	2.1% (176)
	Black, Black British, Black Welsh, Caribbean or African: African	3.2% (491)
	Black, Black British, Black Welsh, Caribbean or African: Caribbean	1.1% (34)
	Black, Black British, Black Welsh, Caribbean or African: Other Black	3.0% (29)
	Mixed or Multiple ethnic groups: Other Mixed or Multiple ethnic groups	1.4% (25)
	Mixed or Multiple ethnic groups: White and Asian	2.1% (40)
	Mixed or Multiple ethnic groups: White and Black African	1.9% (17)
	Mixed or Multiple ethnic groups: White and Black Caribbean	1.0% (30)
	Other ethnic group: Any other ethnic group	1.6% (127)
	Other ethnic group: Arab	1.6% (33)
	White: English, Welsh, Scottish, Northern Irish or British	1.1% (897)
	White: Gypsy or Irish Traveller	5.7% (16)
	White: Irish	1.3% (14)
	White: Other White	2.0% (389)
	White: Roma	1.0% (6)
	Total	1.5% (3,689)
	% of Female Population who are Economically Active and a Full-Time Student: In Employment	Asian, Asian British or Asian Welsh: Bangladeshi
Asian, Asian British or Asian Welsh: Chinese		1.1% (24)
Asian, Asian British or Asian Welsh: Indian		1.2% (1,061)
Asian, Asian British or Asian Welsh: Other		1.6% (121)
Asian, Asian British or Asian Welsh: Pakistani		1.6% (132)
Black, Black British, Black Welsh, Caribbean or African: African		4.3% (670)
Black, Black British, Black Welsh, Caribbean or African: Caribbean		3.0% (95)
Black, Black British, Black Welsh, Caribbean or African: Other Black		3.6% (52)

Equality Data			
		Leicester (%)	
Key Statistics	Ethnic Group	%	
Economically Active: Full Time Student: Unemployed <i>Census 2021</i>	% of Overall Population who are Economically Active and Full-Time Student who is Unemployed: Seeking work or waiting to start a job already obtained: Available to start working within 2 weeks	Mixed or Multiple ethnic groups: Other Mixed or Multiple ethnic groups	2.9% (53)
		Mixed or Multiple ethnic groups: White and Asian	2.9% (54)
		Mixed or Multiple ethnic groups: White and Black African	3.0% (27)
		Mixed or Multiple ethnic groups: White and Black Caribbean	3.2% (97)
		Other ethnic group: Any other ethnic group	1.3% (102)
		Other ethnic group: Arab	1.9% (39)
		White: English, Welsh, Scottish, Northern Irish or British	1.8% (1,396)
		White: Gypsy or Irish Traveller	0.4% (1)
		White: Irish	1.7% (18)
		White: Other White	3.4% (681)
		White: Roma	0.5% (3)
		Total	1.9% (4,698)
		Asian, Asian British or Asian Welsh: Bangladeshi	1.6% (75)
		Asian, Asian British or Asian Welsh: Chinese	1.3% (28)
		Asian, Asian British or Asian Welsh: Indian	1.2% (1,004)
		Asian, Asian British or Asian Welsh: Other	1.7% (125)
		Asian, Asian British or Asian Welsh: Pakistani	2.2% (183)
		Black, Black British, Black Welsh, Caribbean or African: African	5.4% (826)
		Black, Black British, Black Welsh, Caribbean or African: Caribbean	4.2% (131)
		Black, Black British, Black Welsh, Caribbean or African: Other Black	3.7% (54)
		Mixed or Multiple ethnic groups: Other Mixed or Multiple ethnic groups	3.5% (63)
Mixed or Multiple ethnic groups: White and Asian	2.2% (42)		
Mixed or Multiple ethnic groups: White and Black African	5.1% (45)		
Mixed or Multiple ethnic groups: White and Black Caribbean	2.9% (88)		
Other ethnic group: Any other ethnic group	1.1% (89)		
Other ethnic group: Arab	2.4% (51)		
White: English, Welsh, Scottish, Northern Irish or British	1.3% (997)		
White: Gypsy or Irish Traveller	0.7% (2)		

Equality Data		
		Leicester (%)
Key Statistics	Ethnic Group	%
	White: Irish	1.1% (11)
	White: Other White	2.2% (434)
	White: Roma	1.0% (6)
	Total	1.7% (4,294)
% of Male Population who are Economically Active and Full-Time Student who is Unemployed: Seeking work or waiting to start a job already obtained: Available to start working within 2 weeks	Asian, Asian British or Asian Welsh: Bangladeshi	0.6% (28)
	Asian, Asian British or Asian Welsh: Chinese	0.7% (14)
	Asian, Asian British or Asian Welsh: Indian	0.7% (551)
	Asian, Asian British or Asian Welsh: Other	0.8% (62)
	Asian, Asian British or Asian Welsh: Pakistani	1.0% (79)
	Black, Black British, Black Welsh, Caribbean or African: African	2.4% (364)
	Black, Black British, Black Welsh, Caribbean or African: Caribbean	1.2% (37)
	Black, Black British, Black Welsh, Caribbean or African: Other Black	2.0% (29)
	Mixed or Multiple ethnic groups: Other Mixed or Multiple ethnic groups	1.4% (25)
	Mixed or Multiple ethnic groups: White and Asian	0.7% (14)
	Mixed or Multiple ethnic groups: White and Black African	1.4% (12)
	Mixed or Multiple ethnic groups: White and Black Caribbean	1.0% (29)
	Other ethnic group: Any other ethnic group	0.5% (42)
	Other ethnic group: Arab	1.5% (32)
	White: English, Welsh, Scottish, Northern Irish or British	0.5% (390)
	White: Gypsy or Irish Traveller	0.4% (1)
	White: Irish	0.4% (4)
	White: Other White	0.9% (186)
	White: Roma	0.6% (4)
	Total	0.8% (1,903)
% of Female Population who are Economically Active and Full-Time Student who is Unemployed: Seeking work or waiting to start a job already obtained: Available to start working within 2 weeks	Asian, Asian British or Asian Welsh: Bangladeshi	1.0% (47)
	Asian, Asian British or Asian Welsh: Chinese	0.7% (14)
	Asian, Asian British or Asian Welsh: Indian	0.5% (453)
	Asian, Asian British or Asian Welsh: Other	0.8% (63)
	Asian, Asian British or Asian Welsh: Pakistani	1.3% (104)
	Black, Black British, Black Welsh, Caribbean or African: African	3.0% (462)

Equality Data			
		Leicester (%)	
Key Statistics	Ethnic Group	%	
	Black, Black British, Black Welsh, Caribbean or African: Caribbean	3.0% (94)	
	Black, Black British, Black Welsh, Caribbean or African: Other Black	1.7% (25)	
	Mixed or Multiple ethnic groups: Other Mixed or Multiple ethnic groups	2.1% (38)	
	Mixed or Multiple ethnic groups: White and Asian	1.5% (28)	
	Mixed or Multiple ethnic groups: White and Black African	3.7% (33)	
	Mixed or Multiple ethnic groups: White and Black Caribbean	2.0% (59)	
	Other ethnic group: Any other ethnic group	0.6% (47)	
	Other ethnic group: Arab	0.9% (19)	
	White: English, Welsh, Scottish, Northern Irish or British	0.8% (607)	
	White: Gypsy or Irish Traveller	0.4% (1)	
	White: Irish	0.7% (7)	
	White: Other White	1.2% (248)	
	White: Roma	0.3% (2)	
	Total	1.0% (2,351)	
Economically Inactive: Long-term Sick or Disabled <i>Census 2021</i>	% of Overall Population who are Long-term Sick or Disabled	Asian, Asian British or Asian Welsh: Bangladeshi	2.7% (125)
		Asian, Asian British or Asian Welsh: Chinese	0.9% (20)
		Asian, Asian British or Asian Welsh: Indian	3.7% (3,217)
		Asian, Asian British or Asian Welsh: Other	3.2% (241)
		Asian, Asian British or Asian Welsh: Pakistani	4.1% (336)
		Black, Black British, Black Welsh, Caribbean or African: African	2.1% (319)
		Black, Black British, Black Welsh, Caribbean or African: Caribbean	7.8% (246)
		Black, Black British, Black Welsh, Caribbean or African: Other Black	6.4% (92)
		Mixed or Multiple ethnic groups: Other Mixed or Multiple ethnic groups	4.8% (86)
		Mixed or Multiple ethnic groups: White and Asian	6.0% (114)
		Mixed or Multiple ethnic groups: White and Black African	3.0% (27)
		Mixed or Multiple ethnic groups: White and Black Caribbean	9.3% (278)
		Other ethnic group: Any other ethnic group	3.7% (287)
		Other ethnic group: Arab	1.9% (39)
		White: English, Welsh, Scottish, Northern Irish or British	8.8% (7,015)
		White: Gypsy or Irish Traveller	13.8% (39)

Equality Data		
		Leicester (%)
Key Statistics	Ethnic Group	%
% of Male Population who are Long-term Sick or Disabled	White: Irish	5.9% (62)
	White: Other White	1.8% (365)
	White: Roma	2.2% (14)
	Total	5.2% (12,922)
	Asian, Asian British or Asian Welsh: Bangladeshi	1.3% (62)
	Asian, Asian British or Asian Welsh: Chinese	0.6% (12)
	Asian, Asian British or Asian Welsh: Indian	1.7% (1,481)
	Asian, Asian British or Asian Welsh: Other	1.5% (113)
	Asian, Asian British or Asian Welsh: Pakistani	1.7% (138)
	Black, Black British, Black Welsh, Caribbean or African: African	1.1% (160)
	Black, Black British, Black Welsh, Caribbean or African: Caribbean	4.3% (134)
	Black, Black British, Black Welsh, Caribbean or African: Other Black	3.7% (54)
	Mixed or Multiple ethnic groups: Other Mixed or Multiple ethnic groups	2.4% (43)
	Mixed or Multiple ethnic groups: White and Asian	3.9% (74)
	Mixed or Multiple ethnic groups: White and Black African	1.8% (16)
	Mixed or Multiple ethnic groups: White and Black Caribbean	4.4% (131)
	Other ethnic group: Any other ethnic group	2.0% (155)
	Other ethnic group: Arab	1.0% (20)
	White: English, Welsh, Scottish, Northern Irish or British	4.3% (3,420)
	White: Gypsy or Irish Traveller	5.3% (15)
White: Irish	3.5% (37)	
White: Other White	0.9% (170)	
White: Roma	1.4% (9)	
Total	2.5% (6,244)	
% of Female Population who are Long-term Sick or Disabled	Asian, Asian British or Asian Welsh: Bangladeshi	1.4% (63)
	Asian, Asian British or Asian Welsh: Chinese	0.4% (8)
	Asian, Asian British or Asian Welsh: Indian	2.0% (1,736)
	Asian, Asian British or Asian Welsh: Other	1.7% (128)
	Asian, Asian British or Asian Welsh: Pakistani	2.4% (198)
	Black, Black British, Black Welsh, Caribbean or African: African	1.0% (159)

Equality Data			
		Leicester (%)	
Key Statistics	Ethnic Group	%	
	Black, Black British, Black Welsh, Caribbean or African: Caribbean	3.6% (112)	
	Black, Black British, Black Welsh, Caribbean or African: Other Black	2.6% (38)	
	Mixed or Multiple ethnic groups: Other Mixed or Multiple ethnic groups	2.4% (43)	
	Mixed or Multiple ethnic groups: White and Asian	2.1% (40)	
	Mixed or Multiple ethnic groups: White and Black African	1.2% (11)	
	Mixed or Multiple ethnic groups: White and Black Caribbean	4.9% (147)	
	Other ethnic group: Any other ethnic group	1.7% (132)	
	Other ethnic group: Arab	0.9% (19)	
	White: English, Welsh, Scottish, Northern Irish or British	4.5% (3,595)	
	White: Gypsy or Irish Traveller	9.5% (24)	
	White: Irish	2.4% (25)	
	White: Other White	1.0% (195)	
	White: Roma	0.8% (5)	
	Total	2.7% (6,678)	
	Economically Inactive: Looking after Home or Family <i>Census 2021</i>	% of Overall Population who are Looking after Home or Family	Asian, Asian British or Asian Welsh: Bangladeshi
Asian, Asian British or Asian Welsh: Chinese			6.0% (126)
Asian, Asian British or Asian Welsh: Indian			10.9% (9,338)
Asian, Asian British or Asian Welsh: Other			13.1% (979)
Asian, Asian British or Asian Welsh: Pakistani			15.9% (1,320)
Black, Black British, Black Welsh, Caribbean or African: African			7.3% (1,128)
Black, Black British, Black Welsh, Caribbean or African: Caribbean			4.7% (149)
Black, Black British, Black Welsh, Caribbean or African: Other Black			4.4% (63)
Mixed or Multiple ethnic groups: Other Mixed or Multiple ethnic groups			6.2% (112)
Mixed or Multiple ethnic groups: White and Asian			6.1% (115)
Mixed or Multiple ethnic groups: White and Black African			6.3% (56)
Mixed or Multiple ethnic groups: White and Black Caribbean			8.1% (241)
Other ethnic group: Any other ethnic group			11.9% (937)
Other ethnic group: Arab			17.5% (368)
White: English, Welsh, Scottish, Northern Irish or British			6.0% (4,801)
White: Gypsy or Irish Traveller	17.3% (49)		

Equality Data		
		Leicester (%)
Key Statistics	Ethnic Group	%
% of Male Population who are Looking after Home or Family	White: Irish	6.3% (66)
	White: Other White	5.3% (1,059)
	White: Roma	9.6% (60)
	Total	8.9% (21,923)
	Asian, Asian British or Asian Welsh: Bangladeshi	1.8% (86)
	Asian, Asian British or Asian Welsh: Chinese	1.1% (23)
	Asian, Asian British or Asian Welsh: Indian	1.4% (1,195)
	Asian, Asian British or Asian Welsh: Other	1.6% (116)
	Asian, Asian British or Asian Welsh: Pakistani	2.1% (175)
	Black, Black British, Black Welsh, Caribbean or African: African	1.2% (179)
	Black, Black British, Black Welsh, Caribbean or African: Caribbean	1.2% (38)
	Black, Black British, Black Welsh, Caribbean or African: Other Black	1.0% (15)
	Mixed or Multiple ethnic groups: Other Mixed or Multiple ethnic groups	1.4% (26)
	Mixed or Multiple ethnic groups: White and Asian	1.4% (27)
	Mixed or Multiple ethnic groups: White and Black African	0.9% (7)
	Mixed or Multiple ethnic groups: White and Black Caribbean	3.3% (99)
	Other ethnic group: Any other ethnic group	1.7% (135)
	Other ethnic group: Arab	3.0% (64)
	White: English, Welsh, Scottish, Northern Irish or British	1.3% (952)
	White: Gypsy or Irish Traveller	3.5% (10)
White: Irish	0.9% (9)	
White: Other White	0.8% (163)	
White: Roma	2.1% (13)	
Total	1.4% (3,332)	
% of Female Population who are Looking after Home or Family	Asian, Asian British or Asian Welsh: Bangladeshi	18.6% (870)
	Asian, Asian British or Asian Welsh: Chinese	4.9% (103)
	Asian, Asian British or Asian Welsh: Indian	9.5% (8,143)
	Asian, Asian British or Asian Welsh: Other	11.6% (863)
	Asian, Asian British or Asian Welsh: Pakistani	13.8% (1,145)
	Black, Black British, Black Welsh, Caribbean or African: African	6.2% (949)

Equality Data			
		Leicester (%)	
Key Statistics	Ethnic Group	%	
	Black, Black British, Black Welsh, Caribbean or African: Caribbean	3.5% (111)	
	Black, Black British, Black Welsh, Caribbean or African: Other Black	3.3% (48)	
	Mixed or Multiple ethnic groups: Other Mixed or Multiple ethnic groups	4.8% (86)	
	Mixed or Multiple ethnic groups: White and Asian	4.7% (88)	
	Mixed or Multiple ethnic groups: White and Black African	5.5% (49)	
	Mixed or Multiple ethnic groups: White and Black Caribbean	4.8% (142)	
	Other ethnic group: Any other ethnic group	10.2% (802)	
	Other ethnic group: Arab	14.5% (304)	
	White: English, Welsh, Scottish, Northern Irish or British	4.9% (3,849)	
	White: Gypsy or Irish Traveller	13.8% (39)	
	White: Irish	5.4% (57)	
	White: Other White	4.5% (896)	
	White: Roma	7.5% (47)	
	Total	7.5% (18,591)	
Economically Inactive: Retired <i>Census 2021</i>	% of Overall Population who are Retired	Asian, Asian British or Asian Welsh: Bangladeshi	0.4% (18)
		Asian, Asian British or Asian Welsh: Chinese	1.2% (25)
		Asian, Asian British or Asian Welsh: Indian	1.5% (1,315)
		Asian, Asian British or Asian Welsh: Other	0.8% (57)
		Asian, Asian British or Asian Welsh: Pakistani	0.7% (55)
		Black, Black British, Black Welsh, Caribbean or African: African	0.4% (54)
		Black, Black British, Black Welsh, Caribbean or African: Caribbean	1.4% (43)
		Black, Black British, Black Welsh, Caribbean or African: Other Black	1.0% (15)
		Mixed or Multiple ethnic groups: Other Mixed or Multiple ethnic groups	0.4% (8)
		Mixed or Multiple ethnic groups: White and Asian	0.8% (15)
		Mixed or Multiple ethnic groups: White and Black African	0.0% (0)
		Mixed or Multiple ethnic groups: White and Black Caribbean	0.2% (7)
		Other ethnic group: Any other ethnic group	0.7% (52)
		Other ethnic group: Arab	0.5% (11)
White: English, Welsh, Scottish, Northern Irish or British	2.3% (1,787)		
White: Gypsy or Irish Traveller	2.1% (6)		

Equality Data		
		Leicester (%)
Key Statistics	Ethnic Group	%
% of Male Population who are Retired	White: Irish	2.7% (28)
	White: Other White	0.4% (87)
	White: Roma	0.3% (2)
	Total	1.5% (3,585)
	Asian, Asian British or Asian Welsh: Bangladeshi	0.2% (7)
	Asian, Asian British or Asian Welsh: Chinese	0.3% (7)
	Asian, Asian British or Asian Welsh: Indian	0.6% (521)
	Asian, Asian British or Asian Welsh: Other	0.3% (21)
	Asian, Asian British or Asian Welsh: Pakistani	0.3% (21)
	Black, Black British, Black Welsh, Caribbean or African: African	0.2% (25)
	Black, Black British, Black Welsh, Caribbean or African: Caribbean	0.5% (17)
	Black, Black British, Black Welsh, Caribbean or African: Other Black	0.3% (4)
	Mixed or Multiple ethnic groups: Other Mixed or Multiple ethnic groups	0.2% (3)
	Mixed or Multiple ethnic groups: White and Asian	0.5% (10)
	Mixed or Multiple ethnic groups: White and Black African	0.0% (0)
	Mixed or Multiple ethnic groups: White and Black Caribbean	0.1% (3)
	Other ethnic group: Any other ethnic group	0.3% (20)
	Other ethnic group: Arab	0.3% (6)
	White: English, Welsh, Scottish, Northern Irish or British	1.1% (850)
	White: Gypsy or Irish Traveller	1.8% (5)
White: Irish	1.1% (11)	
White: Other White	0.2% (29)	
White: Roma	0.2% (1)	
Total	0.6% (1,561)	
% of Female Population who are Retired	Asian, Asian British or Asian Welsh: Bangladeshi	0.2% (11)
	Asian, Asian British or Asian Welsh: Chinese	0.9% (18)
	Asian, Asian British or Asian Welsh: Indian	0.9% (794)
	Asian, Asian British or Asian Welsh: Other	0.5% (36)
	Asian, Asian British or Asian Welsh: Pakistani	0.4% (34)
	Black, Black British, Black Welsh, Caribbean or African: African	0.2% (29)

Equality Data			
		Leicester (%)	
Key Statistics	Ethnic Group	%	
	Black, Black British, Black Welsh, Caribbean or African: Caribbean	0.8% (26)	
	Black, Black British, Black Welsh, Caribbean or African: Other Black	0.8% (11)	
	Mixed or Multiple ethnic groups: Other Mixed or Multiple ethnic groups	0.3% (5)	
	Mixed or Multiple ethnic groups: White and Asian	0.3% (5)	
	Mixed or Multiple ethnic groups: White and Black African	0.0% (0)	
	Mixed or Multiple ethnic groups: White and Black Caribbean	0.1% (4)	
	Other ethnic group: Any other ethnic group	0.4% (32)	
	Other ethnic group: Arab	0.2% (5)	
	White: English, Welsh, Scottish, Northern Irish or British	1.2% (937)	
	White: Gypsy or Irish Traveller	0.4% (1)	
	White: Irish	1.6% (17)	
	White: Other White	0.3% (58)	
	White: Roma	0.2% (1)	
	Total	0.8% (2,204)	
Economically Inactive: Student <i>Census 2021</i>	% of Overall Population who are Student	Asian, Asian British or Asian Welsh: Bangladeshi	15.9% (744)
		Asian, Asian British or Asian Welsh: Chinese	52.9% (1,121)
		Asian, Asian British or Asian Welsh: Indian	9.2% (7,894)
		Asian, Asian British or Asian Welsh: Other	16.7% (1,243)
		Asian, Asian British or Asian Welsh: Pakistani	16.9% (1,320)
		Black, Black British, Black Welsh, Caribbean or African: African	22.9% (3,537)
		Black, Black British, Black Welsh, Caribbean or African: Caribbean	13.8% (435)
		Black, Black British, Black Welsh, Caribbean or African: Other Black	23.2% (335)
		Mixed or Multiple ethnic groups: Other Mixed or Multiple ethnic groups	23.7% (428)
		Mixed or Multiple ethnic groups: White and Asian	24.2% (458)
		Mixed or Multiple ethnic groups: White and Black African	24.4% (217)
		Mixed or Multiple ethnic groups: White and Black Caribbean	17.3% (516)
		Other ethnic group: Any other ethnic group	11.6% (916)
		Other ethnic group: Arab	27.3% (573)
White: English, Welsh, Scottish, Northern Irish or British	12.5% (9,901)		

Equality Data		
		Leicester (%)
Key Statistics	Ethnic Group	%
% of Male Population who are Student	White: Gypsy or Irish Traveller	6.0% (17)
	White: Irish	10.3% (108)
	White: Other White	9.9% (1,983)
	White: Roma	6.4% (40)
	Total	12.8% (31,786)
	Asian, Asian British or Asian Welsh: Bangladeshi	7.8% (364)
	Asian, Asian British or Asian Welsh: Chinese	27.5% (582)
	Asian, Asian British or Asian Welsh: Indian	4.8% (4,132)
	Asian, Asian British or Asian Welsh: Other	8.4% (623)
	Asian, Asian British or Asian Welsh: Pakistani	7.6% (634)
	Black, Black British, Black Welsh, Caribbean or African: African	11.2% (1,734)
	Black, Black British, Black Welsh, Caribbean or African: Caribbean	5.5% (172)
	Black, Black British, Black Welsh, Caribbean or African: Other Black	10.8% (156)
	Mixed or Multiple ethnic groups: Other Mixed or Multiple ethnic groups	10.5% (189)
	Mixed or Multiple ethnic groups: White and Asian	12.8% (242)
	Mixed or Multiple ethnic groups: White and Black African	10.9% (97)
	Mixed or Multiple ethnic groups: White and Black Caribbean	7.0% (208)
	Other ethnic group: Any other ethnic group	5.7% (451)
	Other ethnic group: Arab	14.0% (295)
	White: English, Welsh, Scottish, Northern Irish or British	6.1% (4,872)
	White: Gypsy or Irish Traveller	3.9% (11)
White: Irish	5.1% (53)	
White: Other White	4.2% (833)	
White: Roma	3.3% (21)	
Total	6.3% (15,669)	
% of Female Population who are Student	Asian, Asian British or Asian Welsh: Bangladeshi	8.1% (380)
	Asian, Asian British or Asian Welsh: Chinese	25.4% (539)
	Asian, Asian British or Asian Welsh: Indian	4.4% (3,762)
	Asian, Asian British or Asian Welsh: Other	8.3% (620)
	Asian, Asian British or Asian Welsh: Pakistani	8.3% (686)

Equality Data			
		Leicester (%)	
Key Statistics	Ethnic Group	%	
	Black, Black British, Black Welsh, Caribbean or African: African	11.7% (1,803)	
	Black, Black British, Black Welsh, Caribbean or African: Caribbean	8.3% (263)	
	Black, Black British, Black Welsh, Caribbean or African: Other Black	12.4% (179)	
	Mixed or Multiple ethnic groups: Other Mixed or Multiple ethnic groups	13.3% (239)	
	Mixed or Multiple ethnic groups: White and Asian	11.4% (216)	
	Mixed or Multiple ethnic groups: White and Black African	13.5% (120)	
	Mixed or Multiple ethnic groups: White and Black Caribbean	10.3% (308)	
	Other ethnic group: Any other ethnic group	5.9% (465)	
	Other ethnic group: Arab	13.2% (278)	
	White: English, Welsh, Scottish, Northern Irish or British	6.3% (5,029)	
	White: Gypsy or Irish Traveller	2.1% (6)	
	White: Irish	5.3% (55)	
	White: Other White	5.8% (1,150)	
	White: Roma	3.0% (19)	
	Total	6.5% (16,117)	
Economically Inactive: Other <i>Census 2021</i>	% of Overall Population who are Other	Asian, Asian British or Asian Welsh: Bangladeshi	5.8% (271)
		Asian, Asian British or Asian Welsh: Chinese	3.5% (74)
		Asian, Asian British or Asian Welsh: Indian	5.0% (4,331)
		Asian, Asian British or Asian Welsh: Other	6.2% (464)
		Asian, Asian British or Asian Welsh: Pakistani	5.1% (426)
		Black, Black British, Black Welsh, Caribbean or African: African	4.5% (695)
		Black, Black British, Black Welsh, Caribbean or African: Caribbean	5.1% (161)
		Black, Black British, Black Welsh, Caribbean or African: Other Black	7.0% (101)
		Mixed or Multiple ethnic groups: Other Mixed or Multiple ethnic groups	3.3% (60)
		Mixed or Multiple ethnic groups: White and Asian	4.9% (93)
		Mixed or Multiple ethnic groups: White and Black African	6.1% (54)
		Mixed or Multiple ethnic groups: White and Black Caribbean	5.9% (175)
		Other ethnic group: Any other ethnic group	9.6% (756)
		Other ethnic group: Arab	7.4% (156)

Equality Data		
		Leicester (%)
Key Statistics	Ethnic Group	%
% of Male Population who are Other	White: English, Welsh, Scottish, Northern Irish or British	4.7% (3,700)
	White: Gypsy or Irish Traveller	7.4% (21)
	White: Irish	4.7% (49)
	White: Other White	3.3% (664)
	White: Roma	9.1% (57)
	Total	5.0% (12,308)
	Asian, Asian British or Asian Welsh: Bangladeshi	2.7% (125)
	Asian, Asian British or Asian Welsh: Chinese	1.8% (37)
	Asian, Asian British or Asian Welsh: Indian	2.5% (2,184)
	Asian, Asian British or Asian Welsh: Other	3.2% (242)
	Asian, Asian British or Asian Welsh: Pakistani	2.5% (206)
	Black, Black British, Black Welsh, Caribbean or African: African	2.4% (372)
	Black, Black British, Black Welsh, Caribbean or African: Caribbean	2.5% (80)
	Black, Black British, Black Welsh, Caribbean or African: Other Black	4.2% (61)
	Mixed or Multiple ethnic groups: Other Mixed or Multiple ethnic groups	2.2% (40)
	Mixed or Multiple ethnic groups: White and Asian	2.4% (45)
	Mixed or Multiple ethnic groups: White and Black African	2.9% (26)
	Mixed or Multiple ethnic groups: White and Black Caribbean	3.3% (100)
	Other ethnic group: Any other ethnic group	5.6% (441)
	Other ethnic group: Arab	3.8% (80)
	White: English, Welsh, Scottish, Northern Irish or British	2.6% (2,033)
	White: Gypsy or Irish Traveller	3.2% (9)
	White: Irish	2.5% (26)
	White: Other White	1.6% (325)
White: Roma	5.9% (37)	
Total	2.6% (6,469)	
% of Female Population who are Other	Asian, Asian British or Asian Welsh: Bangladeshi	3.1% (146)
	Asian, Asian British or Asian Welsh: Chinese	1.8% (37)
	Asian, Asian British or Asian Welsh: Indian	2.5% (2,147)

Equality Data		
		Leicester (%)
Key Statistics	Ethnic Group	%
	Asian, Asian British or Asian Welsh: Other	3.0% (222)
	Asian, Asian British or Asian Welsh: Pakistani	2.7% (220)
	Black, Black British, Black Welsh, Caribbean or African: African	2.1% (323)
	Black, Black British, Black Welsh, Caribbean or African: Caribbean	2.6% (81)
	Black, Black British, Black Welsh, Caribbean or African: Other Black	2.8% (40)
	Mixed or Multiple ethnic groups: Other Mixed or Multiple ethnic groups	1.1% (20)
	Mixed or Multiple ethnic groups: White and Asian	2.5% (48)
	Mixed or Multiple ethnic groups: White and Black African	3.2% (28)
	Mixed or Multiple ethnic groups: White and Black Caribbean	2.5% (75)
	Other ethnic group: Any other ethnic group	3.0% (315)
	Other ethnic group: Arab	3.6% (76)
	White: English, Welsh, Scottish, Northern Irish or British	2.1% (1,667)
	White: Gypsy or Irish Traveller	4.2% (12)
	White: Irish	2.2% (23)
	White: Other White	1.7% (339)
	White: Roma	3.2% (20)
	Total	2.36% (5,839)

Note: This report relies on the most up-to-date data available from the Annual Population Survey (2021). At the time of production, data relating to ethnicity and economic activity was temporarily unavailable. Census 2021 data relating to ethnicity and economic activity is yet to be published at a Local Authority level.

3.0 Beneficiary Analysis

3.1 Project Beneficiary Summary

The table over the page summarises the projects featured as part of this evaluation. Projects have been categorised as aligning with one, or both, of the People & Skills and Supporting Local Businesses UKSPF priorities.

Projects have been assessed by their beneficiary characteristics. There are two parts to the summary:

- a. Assessment Framework
- b. Summary Table.

Note: the assessment framework is designed to illustrate which projects are reaching particular beneficiary groups in the community. The exercise aims to identify on whom activities are concentrated and conversely where there is less provision. As some projects are targeted at different target groups, they are more likely to score higher (light green) in some categories and lower (dark green) in others. The analysis is intended to be used as a tool for comparison and should not be viewed as an evaluation of a project's effectiveness.

- Most projects under the People & Skills theme have had success at concentrating activity on those furthest from the labour market. Several CRF projects have exclusively delivered activities to economically inactive/unemployed people.
- With a number of projects delivering directly to young people, one-third (34%) of all beneficiaries were aged between 16 and 24, whereas only 19% of beneficiaries were aged 50+.
- Most projects delivered to less than the representative population (28%) of people aged 50+.
- Although there is a broad split of male and female participants across all EU/CRF funded projects, some have proven more effective at engaging with one gender or the other.
- The proportion of BAME beneficiaries participating in People & Skills varies from 37% to 93%.
- Most projects delivered to more than the representative population (19%) of people identified as being either short- or long-term sick.

Criteria	Assessment Framework		
	Low	Medium	High
Beneficiaries			
<p>Focus on people furthest from the labour market</p> <p><i>36.1% of Leicester's population is economically inactive or unemployed.</i></p>	<p>Project delivers to less than the representative population % of economically inactive/unemployed.</p> <p>Less than 36.1% of beneficiaries classed as 'unemployed' or 'economically inactive'.</p>	<p>Project delivers to more than the representative population % of economically inactive/unemployed.</p> <p>Between 36.1% and 50% of beneficiaries classed as 'unemployed' or 'economically inactive'.</p>	<p>Project delivers more than half of its activities to economically inactive/unemployed.</p> <p>Above 50% of beneficiaries classed as 'unemployed' or 'economically inactive'.</p>
<p>Age of Beneficiaries</p> <p><i>13.1% of Leicester's population is aged 16-24. 28.0% of Leicester's population is aged 50+.</i></p>	<p>Project delivers to less than the representative population % of each target age group in the population.</p> <p>Less than 13.1% of beneficiaries aged 24 or under, or less than 28.0% aged 50 and over.</p>	<p>Project delivers to more than the representative population % of each target age group in the population.</p> <p>Between 13.1% and 50% of beneficiaries aged 24 or under, or between 28.0% and 50% aged 50 and over.</p>	<p>Project delivers more than half of its activities to the target age groups in the population.</p> <p>Above 50% of beneficiaries aged 24 or under, or more than 50% aged 50 and over.</p>
<p>Gender of Beneficiaries</p> <p><i>50.5% of Leicester's population are women.</i></p>	<p>Project delivers to less than the representative population % of women.</p> <p>Less than 50.5% of beneficiaries identifying as female.</p>	<p>Project delivers to more than the representative population % of women.</p> <p>Between 50.5% and 66% of beneficiaries identifying as female.</p>	<p>Project delivers to more than twice the number of women as men.</p> <p>Above 66% of beneficiaries identifying as female.</p>
<p>Ethnicity of Beneficiaries</p> <p><i>49.2% of Leicester's population (aged 16+) identified as being from a BAME group.</i></p>	<p>Project delivers to less than the representative population % of BAME.</p> <p>Fewer than 49.2% of beneficiaries identified as BAME.</p>	<p>Project delivers to more than the representative population % of BAME.</p> <p>Between 49.2% and 66% of beneficiaries identified as BAME.</p>	<p>Project delivers to more than twice the number of BAME beneficiaries as otherwise.</p> <p>More than 66% of beneficiaries identified as BAME.</p>
<p>Disabilities</p> <p><i>8.8% of Leicester's population identify as being disabled and limited a lot</i> <i>19% of Leicester's population identify as being short- or long-term sick</i></p>	<p>Project delivers to less than the population representative % of people identified as being disabled and limited a lot.</p> <p>Fewer than 8.8% of beneficiaries identified as having a disability.</p>	<p>Project delivers to more than the population representative % of people identified as being disabled and limited a lot.</p> <p>Between 8.8% and 19% of beneficiaries identified as having a disability.</p>	<p>Project delivers to more than the population representative % of people identified as being either short- or long-term sick.</p> <p>More than 19% of beneficiaries identified as having a disability.</p>

Project Beneficiary Summary									
Theme	Project Name	Brief Description	Project Beneficiaries (Distance from Labour Market Y/N, Types/Sectors)	Demographic - People & Skills Only					% 'Furthest from the Labour Market'
				Age (% under 25)	Age (% 50+)	Gender (% Female)	Ethnicity (% BAME)	Disability (% with)	
People & Skills	Get Inspired Leicester	Links to delivery of Youth Employment Hub support young people into EET	NEET young people who are economically inactive or unemployed aged 15-24. Supported many more individuals than contracted, all of whom are economically inactive or unemployed, including 38% with disabilities, 30% without basic skills, and 15% living in a single adult households with dependent children.	100%	0%	41%	56%	38%	100%
	YES: Youth Employability Support/ Reboot	Support for the most disengaged NEET young people (15-24yrs)	Targets NEET young people furthest from the labour market. 75% of participants came with what BBO defined as a 'disadvantage'.	98%	0%	48%	40%	27%	100%
	GREAT: Getting Ready for Employment and Training	Assisting families into EET	Unemployed and economically inactive adult family members with multiple barriers to employment; participants are socially excluded and furthest from the labour market. Projected to achieve 119% of target for women, 99% for economically inactive targets, 95% for ethnic minorities.	16%	7%	70%	40%	27%	100%
	Moneywise Plus: Digital and Financial Inclusion	Improving digital and financial skills	Targets those furthest from the labour market (people with disabilities, 50+, long-term unemployed and BAME communities).	13%	34%	50%	42%	48%	100%
	Skills Support for the Unemployed	Support for the unemployed to help them into work	Targeting unemployed individuals. SSU targeted beneficiaries who were a little closer to the labour market than Twin Training's CRF project, but the model was flexible.	21%	22%	36%	50%	26%	100%
	Community Grants	Grants to the VCS sector to deliver support to those furthest from the labour market	All partners engaged with disadvantaged or socially isolated individuals to secure qualifications or progress into voluntary or paid employment.	18%	11%	66%	81%	21%	/
	Leicester Community ESOL Project	3-month Pre-Entry ESOL training for Bangladesh, Indian, Pakistan and Romanian beneficiaries	Most beneficiaries were Indian (40%) due to a large local population and impact of Covid-19. More diversity than expected, suggesting a more widespread need than Twin anticipated during programme design.	3%	37%	71%	77%	35%	100%
	Positive Communities	Community outreach support including IAG, soft skills, CV, Job Skills	Targeting some of the most vulnerable groups in the city, especially those affected by Covid-19, and those less likely to access mainstream activities.	20%	24%	66%	87%	8%	83%

Project Beneficiary Summary									
Theme	Project Name	Brief Description	Project Beneficiaries (Distance from Labour Market Y/N, Types/Sectors)	Demographic - People & Skills Only					% 'Furthest from the Labour Market'
				Age (% under 25)	Age (% 50+)	Gender (% Female)	Ethnicity (% BAME)	Disability (% with)	
Mix	East Midlands Accelerator	5 Accelerators: Net Zero, Digital Transformation, Scale Up to Start Up, Kickstart, Financial	Most businesses involved in Manufacturing (18%), Retail/Wholesale (15.7%), Other Service Activities (13%) and Professional, Scientific and Technical (10%).	/	/	/	/	/	/
	Leicester Textiles Renewal	Support for textiles manufacturers and learners	Beneficiaries include textiles manufacturers, ESOL learners, and pre-start learners looking for a career in textiles.	8%	26%	86%	92%	0%	60%
	She Inspired Business Playbox	Support for women to move into employment or self-employment	Women furthest away from the jobs market.	4%	20%	100%	93%	17%	64%
	Leicestershire Employment Hub	Support for employers to recruit, linking individuals into employment	Majority small businesses (80%) engaged and lower-level jobs. Target sectors include: Care and Construction. Includes low-income households, refugees, and asylum seekers. Predominantly Asian beneficiaries in Leicester.	74%	1%	37%	37%	16%	N/A
Supporting Local Businesses	Green BELLE	Capital grants, audits and advice to increase energy efficiency, reduce carbon emissions and increase the uptake of renewable technology.	Most grants to SMEs in the Manufacturing and Textiles sectors.						N/A
	Leicestershire Growth Hub	Business support package, diagnostic, 1:1 support, networks, event, consultancy, grants etc	All SMEs looking for start-up, growth, recruitment, investment, finance, premises, employment, skills, and compliance support.			N/A			N/A
	Leicester Life Sciences Accelerator	Specialist life sciences incubation and grow on provision	Aimed at Life Sciences, Medical Technology and Healthcare SMEs.						N/A
			All manufacturing sectors including space.						N/A

Project Beneficiary Summary									
Theme	Project Name	Brief Description	Project Beneficiaries (Distance from Labour Market Y/N, Types/Sectors)	Demographic - People & Skills Only					% 'Furthest from the Labour Market'
				Age (% under 25)	Age (% 50+)	Gender (% Female)	Ethnicity (% BAME)	Disability (% with)	
	Space Technology Applications from Research (STAR)	Innovation support (audits, placements, courses) for manufacturing sectors including space							
	Promoting SME Product Enhancement and Research (PROSPER)	Higher value business and product innovation support	Designed to support businesses further towards Innovate UK or Smart Grants. Primary sectors engaged include: Advanced Manufacturing & Engineering, Science and Technology sub-sectors, Creative Industries and Food & Drink Manufacturing						N/A
	Leicester Innovation Accelerator	Extended UoL's Leicester's Innovation Hub, promoting and enhances R&I infrastructure and SME investment	Most were established SMEs while some were start-ups from the University of Leicester. Target sectors included: Space Science, Engineering, AI, Data Analytics, Advanced Manufacturing, Environmental Sustainability						N/A
	Growing Enterprise	Business advice for pre-starts, new and trading SMEs	Pre-start, new start and trading businesses. Broad sector coverage, strong contingents from Professional Services, Manufacturing, Wholesale/retail/automotive, Food Services, Administrative, and Healthcare.						N/A
	Manufacturing Growth Programme (MGP)	Manufacturing Growth Programme Extension covering 18 LEP areas.	Small and micro manufacturing SMEs, mostly Engineering and Textiles.						N/A
	Better Off in Business	Support hard to reach 18 to 30yr olds from disadvantaged and under-represented groups to move into self-employment.	Aimed at young people who are unemployed and disadvantaged across 9 LEP areas. LLEP ranks 3rd (out of 9 LEP areas) in terms of performance for supporting disadvantaged young people, with around a third of young people from the most disadvantaged quintile.						N/A
	Leicester Graduate City	Project to drive graduate retention in the City	Students from UoL and DMU. Target sectors include: Professional Services, Creative and Digital, Low Carbon, Health and Social Care, Engineering and Advanced Technology, Manufacturing and Retail.	98%	0%	67%	61%	8%	N/A

3.2 Distance from the Labour Market

The levelling up baseline data demonstrates some of the biggest challenges facing people within Leicester are economic, driven by high levels of unemployment, access to in demand skills, low pay, low levels of disposable household income and in some cases a lack of opportunity.

Due to the various needs of different target groups, some individuals require intensive longer-term assistance to help overcome multiple and complex needs (e.g., homelessness, disabilities, financial vulnerability, addiction, mental health challenges etc), that not only prevent people gaining employment but also accessing employment support provision in general.

Each People & Skills themed EU/CRF funded project was therefore assessed on whether existing activities focussed on people furthest from the labour market. With the SPF designed to provide a new focus on the economically inactive, projects were required to provide a breakdown of individuals supported by their economic activity.

Economic Activity of Beneficiaries

Individuals categorised as ‘furthest from the labour market’ include those defined as ‘economically inactive’ or ‘unemployed’. The table below shows project outputs achieved as reported in the UKSPF Information Templates, December 2022.

Economic Activity of Beneficiaries						
Project	Economically Inactive	Unemployed	Total EI + Unemployed	Employed	Total	% 'Furthest from the Labour Market'
Get Inspired	353	403	756	0	756	100%
YES	444	319	763	0	763	100%
GREAT	451	304	755	0	755	100%
Moneywise Plus	999	649	1648	0	1648	100%
Skills Support for the Unemployed	0	2476	2476	0	2476	100%
Leicester Community ESOL Project	12	213	225	0	225	100%
Positive Communities	395	320	715	151	866	83%
She Inspired Business Playbox	45	8	53	30	83	64%
Leicester Textiles Renewal	103	11	114	77	191	60%

Most projects under the People & Skills theme have had success at concentrating activity on those furthest from the labour market. Several projects have exclusively delivered activities to economically inactive/unemployed people.

- Economically inactive participants are typically the hardest beneficiary group to target. Projects such as Moneywise, Get Inspired, YES and GREAT have been particularly effective at recruiting economically inactive beneficiaries.
- Moneywise Plus specifically delivers to those that are furthest from the labour market (targeting people with disabilities, 50+, long term unemployed and BAME communities).
- Although the She Inspired project has engaged with some employed participants, the project targeted female-led entrepreneurial enterprises.

- In all of these projects a key element was the individual tailor-made support provided to each participant which built confidence and self-esteem as well as developing job ready skills. The most effective measures to encourage both the long-term unemployed back into work and to help young people enter the labour market within the city and in other elsewhere, featured highly focussed individual mentoring of clients. It is recommended that individual personalised mentoring is a feature of projects promoted, supported, or run by the City Council.

3.3 Demographics

Leicester's population is very diverse and therefore targeted approaches will be required.

Leicestershire's current employment rate for BME groups and the White population alike falls below the national average. The lowest employment rate is Other Asian.

The DWP report shows that all three of Leicester's parliamentary constituencies (Leicester East, South and West) are the highest hotspots for youth unemployment. Leicester East, West and South are within the top 10 highest hotspots for those aged 50+.

This section therefore analyses the demographic makeup of beneficiaries for each People & Skills themed EU/CRF funded project. Projects were required to provide a breakdown of individuals supported by their age, gender, and ethnicity. A breakdown of participants helps to demonstrate where activity has been concentrated.

a. Age of Beneficiaries

Unemployment differs across neighbouring communities. Notably, unemployment for over 50's is growing, whilst Leicester has a high proportion of young people too and key to the success of its young people will be enabling the linking / successful transition from school into post 16 employment and training, from college to university or employment, and from university to employment.

Projects were asked to provide a breakdown of individuals supported by age. The table below shows project participants as reported in the UKSPF Information Template, December 2022.

Age of Beneficiaries												
Project	Under 16	16-24	25-29	30-34	35-39	40-44	45-49	50-54	54-59	60-64	65+	Total
Leicester Graduate City	0	50	0	1	0	0	0	0	0	0	0	51
Leicester Textiles Renewal	0	16	7	20	44	26	29	23	17	9	0	191
She Inspired Business Playbox	0	3	9	6	18	22	8	8	4	2	2	82
Leicestershire Employment Hub	0	130	35	0	0	4	4	0	2	0	0	175
Get Inspired Leicester	0	765	0	0	0	0	0	0	0	0	0	765
YES	13	750	0	0	0	0	0	0	0	0	0	763
GREAT	0	123	129	133	152	98	68	28	18	6	0	755
Moneywise Plus	0	210	140	167	180	193	196	168	197	148	49	1648
Skills Support for the Unemployed	0	526	335	298	276	262	222	179	186	139	53	2476
Community Grants	0	75	60	55	75	61	46	25	12	8	2	419
Leicester Community ESOL Project	0	8	20	34	31	27	26	26	28	26	4	230
Positive Communities	0	170	58	104	123	111	88	71	53	50	37	865
Total	13	2826	793	818	899	804	687	528	517	388	147	8420
%	0%	34%	9%	10%	11%	10%	8%	6%	6%	5%	2%	

The table over the page demonstrates the percentage of project beneficiaries aged either 16-24 or 50+, to identify which have been targeting specific age groups.

Overall, across all projects, there is a broad range of beneficiary ages, with fairly equal proportions of those aged between 25 and 49 engaging with project activities. However, More people aged 16-24 accessed People & Skills project activities than any other age band (34%). This could be indicative of a local need for supporting specifically young people into Education, Employment of Training (EET), including the most disengaged and the unemployed. This could also suggest that younger people are easier to engage with.

Age of Project Beneficiaries					
Project	16-24		Project	50+	
	#	%		#	%
Get Inspired Leicester	765	100%	Leicester Community ESOL	84	37%
YES	750	98%	Moneywise Plus	562	34%
Leicester Graduate City	50	98%	Leicester Textiles Renewal	49	26%
Employment Hub	130	74%	Positive Communities	211	24%
Skills Support for the Unemployed	526	21%	Skills Support for the Unemployed	557	22%
Positive Communities	170	20%	She Inspired Business Playbox	16	20%
GREAT	123	16%	Community Grants	47	11%
Community Grants	75	18%	GREAT	52	7%
Moneywise Plus	210	13%	Employment Hub	2	1%
Leicester Textiles Renewal	16	8%	Get Inspired Leicester	0	0%
She Inspired Business Playbox	3	4%	YES	0	0%
Leicester Community ESOL	8	3%	Leicester Graduate City	0	0%
Total	2826	34%		1580	19%

Young People

- One-third of all participants were aged between 16 and 24, in part due to the high number of young people engaged by Leicester City Council's **Get Inspired Leicester** project, VAL's **Youth Employment Support** scheme, and Twin Training's **Skills Support for the Unemployed**.
- The **Employment Hub** and **Graduate City** projects also specifically targeted young people.
- Get Inspired Leicester and YES appear to target similar beneficiary age groups with a similar scope of support. Although Skills Support for the Unemployed has a broader range of beneficiaries, 21% of participants are also aged between 16 and 24, which could also represent some overlap of delivery.
- In particular, Talent Match drew attention to the importance of the role of Key Workers in providing tailored support to address individual needs and barriers, offering help with travel costs and childcare, engaging employers in providing pre-employment training and work experience opportunities, and facilitating young people's voice in the programme. Additionally, childcare could be provided to enhance accessibility, whilst transport costs could also be covered.

Older People

- The numbers of beneficiaries engaged with activities declines at age 50 onwards. At 19%, existing projects deliver to a lower proportion of people aged 50+ than the existing population.
- Both **Leicester Community ESOL Project** (37%) and **Moneywise** (34%) registered the highest proportion of beneficiaries aged 50 and over. This is largely attributed to a real need for digital skills amongst older people as well as the need for ESOL amongst the high number of people who have moved to (and stayed in) Leicester who can't speak English.

b. Gender of Beneficiaries

An IES Analysis of Labour Force Survey (Section 1.2.d Disability) reveals that the highest proportion of economically inactive people who would 'will definitely work again' (excluding students) are those 'looking after family or home'. This group also forms a substantial proportion of those who would 'like to work again at the moment', 'will probably work again', and who 'don't know'. Economic inactivity in Leicester is also higher amongst women (37.7%) than men (22.4%). With women more likely to be economically inactive and looking after the family or home, programmes targeting women in families should be considered.

Projects were asked to provide a breakdown of individuals supported by gender. The table over the page shows project participants as reported in the UKSPF Information Template, December 2022.

Gender of Beneficiaries						
Project	Male	Female		Other	Prefer not to say	Total
		#	%			
She Inspired Business Playbox	0	83	100%	0	0	83
Leicester Textiles Renewal	26	165	86%	0	0	191
Leicester Community ESOL	66	164	71%	0	0	230
Leicester Graduate City	17	34	67%	0	0	51
GREAT	228	539	70%	0	0	767
Community Grants	142	277	66%	0	0	419
Positive Communities	297	569	66%	0	0	866
Moneywise Plus	822	826	50%	0	0	1648
YES	387	368	48%	0	8	763
Get Inspired Leicester	444	308	41%	4	0	756
Leicestershire Employment Hub	119	72	37%	2	2	195
Skills Support for the Unemployed	1578	898	36%	0	0	2476
Total	4126	4303		6	10	8445
%	49%		51%	0%	0%	

Although there is a broad split of male and female participants across all EU/CRF funded projects, some had been designed to engage with particular genders more so than others:

- **She Inspired Business Playbox** targeted women looking to move into employment/self-employment and thus 100% of beneficiaries are women.
- **GREAT** engaged with 70% female participants. GREAT project specifically targets families with economically inactive personnel, which represents a significant area for improvement across the labour market.
- **Skills Support for the Unemployed** engaged with 64% male participants.
- **Community Grants** issued funding to 66% female participants, well above its 36% contractual target. The project focussed on Community and Voluntary sector initiatives.
- **Leicester Community ESOL Project** engaged with 71% female participants. ESOL training thought to be more relevant for females (particularly in Bangladeshi, Pakistani, Indian and Romanian communities).
- **Positive Communities** engaged with 66% female participants. With the rate of unemployment higher amongst ethnic minority women (9.6%) than men (7.6%) and economic inactivity higher amongst women generally, the project has effectively delivered soft skills activity to the female BAME community.
- Lessons learnt from consultation with a number of projects reveals the links between the need for female-specific programmes and the need to support specific ethnic groups. Leicester is home to a diverse ethnic population who typically face multiple barriers to employment or economic activity due to cultural conventions. Any female-specific programme funded via UKSPF should consider focussing on specific ethnic groups.

c. Ethnicity of Beneficiaries

Unemployment differs across neighbouring estates in Leicester. Some areas have higher concentrations of unemployed young white men, while other estates show higher concentrations amongst the Bangladeshi and Pakistani, Polish, and Black communities.

Projects were asked to provide a breakdown of individuals supported by ethnic group. The table below shows project participants as reported in the UKSPF Information Template, December 2022.

Ethnicity of Beneficiaries								
Project	White	Mixed/ Multiple ethnic Groups	Asian/ Asian British	Black/ African/ Caribbean/ Black British	Other ethnic group	Prefer not to say	Total	% BAME
She Inspired Business Playbox	6	1	61	9	5	0	82	93%
Leicester Textiles Renewal	14	0	155	18	2	2	191	92%
Positive Communities	107	20	573	123	49	5	877	87%
Community Grants	81	18	254	64	2	0	419	81%
Leicester Community ESOL Project	52	0	129	29	20	0	230	77%
Leicester Graduate City	20	5	20	5	1	0	51	61%
Get Inspired Leicester	329	87	191	70	73	6	756	56%
Skills Support for the Unemployed	1233	110	776	239	118	0	2476	50%
Moneywise Plus	943	58	336	242	62	7	1648	42%
YES	445	34	209	33	21	3	745	40%
GREAT	480	14	185	47	77	4	807	40%
Leicestershire Employment Hub	121	12	50	9	1	2	195	37%
Total	3831	359	2939	888	431	29	8477	54%
%	45%	4%	35%	10%	5%	0%		

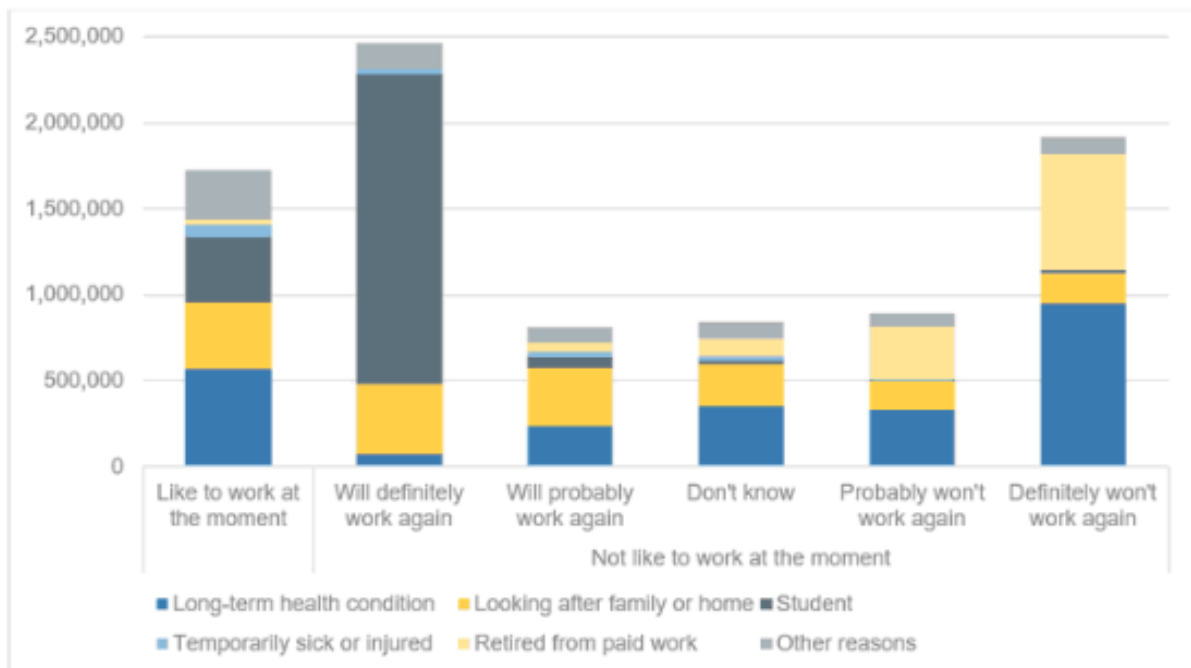
Some projects had been designed to directly target BAME communities more than others:

- All of **Leicester Community ESOL**, **Leicester Textiles Renewal**, **Positive Communities**, **She Inspired Playbox** and **Community Grants** report that more than three-quarters of their beneficiaries identified as BAME ethnic groups.
- The projects concentrating on younger people (e.g. **YES**, **GREAT**, **Employment Hub**) record the lowest proportion of BAME beneficiaries. This might be representative but could also indicate a lack of support programmes for, and insufficient engagement with, BAME young people.
- **Moneywise Plus** and **Skills Support for the Unemployed** have engaged with the most beneficiaries from Black/African/Caribbean/Black British ethnic groups.
- The **She Inspired Playbox** project has largely centred on Asian/Asian British beneficiaries.
- **Leicester Graduate City** has recruited more women and BAME representatives than White participants to internship programmes. The project’s performance in attracting BAME students for internships can be attributed to the diverse student populations at the university partners. For example, the University of Leicester has 71 ethnicities represented in its student population. DMU’s student population is representative of the city as more home-based students attend DMU.

d. Disability

Leicester City Council’s UKSPF Investment Plan acknowledges that due to the various needs of different target groups, some individuals require intensive longer-term assistance to help overcome multiple and complex needs (e.g. disabilities) that not only prevent people gaining employment but also accessing employment support provision in general.

Figure 8: Economically inactive by whether would like to work at the moment, expect that they will work in future and main reason for being outside of the labour market



Source: IES analysis of Labour Force Survey

- An IES Analysis of Labour Force Survey (on the previous page) reveals that the highest proportion of economically inactive people who would 'like to work at the moment' are those with a long-term health condition. This group also forms a substantial proportion of those who 'will probably work again' and who 'don't know'. Programmes targeting those with long-term health conditions should be considered as a primary means of encouraging people back to the labour market.

Projects were asked to provide a breakdown of individuals supported by disability. The table below shows project participants as reported in the UKSPF Information Template, December 2022.

Disability of Beneficiaries					
Project	With		Without		Total
	#	%	#	%	
Moneywise Plus	786	48%	862	52%	1648
Get Inspired Leicester	288	38%	468	62%	756
Leicester Community ESOL Project	80	35%	150	65%	230
YES	209	27%	554	73%	763
GREAT	199	27%	547	73%	746
Skills Support for the Unemployed	643	26%	1833	74%	2476
Community Grants	86	21%	333	79%	419
She Inspired Business Playbox	14	17%	69	83%	83
Leicestershire Employment Hub	30	16%	160	84%	190
Positive Communities	69	8%	784	92%	853
Leicester Graduate City	4	8%	47	92%	51
Leicester Textiles Renewal	0	0%	188	100%	188
Total	2408	29%	5995	71%	8403

- Some ESF/CRF projects have delivered support to people with disabilities at a higher rate than others; for example, **Moneywise** has supported almost equal numbers of people with or without disabilities with digital and financial skills. More than one-third of participants in the **Get Inspired** and **Leicester Community ESOL** project have engaged with people with disabilities.

3.4 Geographic Analysis

Projects were asked to provide location data for their beneficiaries.

Note: Only projects that have provided postcode data have been included. Where projects have only provided partial postcodes (e.g., LE1), the Leicester postcode area is defined as LE1, LE2, LE3, LE4 and LE5. Some projects have provided anecdotal evidence in lieu of postcode information.

a. Leicester vs Delivery Across Leicester and Leicestershire

Many of the projects included in this evaluation were contracted to deliver across the whole Leicester/ Leicestershire area. With the UKSPF programme likely to concentrate delivery on Leicester, the table below demonstrates the proportion of project beneficiaries located in either Leicester or the Leicester/ Leicestershire area.

Individuals

Participant Postcodes	
Project	% in Leicester
Leicester Textiles Renewal	99%
She Inspired Business Playbox	99%
Positive Communities	99%
Leicester Community ESOL Project	98%
Leicester Graduate City	98%
Moneywise Plus	75%
Leicestershire Employment Hub	65%
YES	65%
Better Off in Business	63%
GREAT	61%

- As expected, CRF projects have delivered almost exclusively to participants in Leicester, as contracted. Many of the ESF funded projects have been delivering across Leicester and Leicestershire.
- The Leicester Graduate City project has almost exclusively delivered support to University of Leicester/De Montfort University students located in Leicester. However, the universities' operate across Leicester and Leicestershire and will continue to provide added value connections outside of the city.
- 56% of Leicester Textiles Renewal's beneficiaries are located in LE5, which is identified as one of the 5% most deprived areas in the country.
- Both the YES and GREAT projects are based in Leicester but are open to residents in the wider Leicester and Leicestershire area.

Businesses

Business Postcodes	
Project	% in Leicester
Leicester Textiles Renewal	100%
Leicester Graduate City	64%
Leicestershire Employment Hub	60%
Leicester Innovation Accelerator	57%
Green BELLE	56%
Growing Enterprise	53%
PROSPER	34%
STAR	29%
Manufacturing Growth Programme	25%

- Many of the EU funded projects have been delivering across Leicester and Leicestershire.
- Many of the university-based projects operate regionally or even nationally and therefore have only delivered to a minority of businesses in the Leicester area. The likes of PROSPER (34%), Leicester Life Sciences Accelerator and STAR (29%) have regional remits and anecdotal evidence suggests that universities will find it more difficult to deliver place-based activities.

- However, despite a broad innovation remit, nearly two-thirds (57%) of Leicester Innovation Accelerator’s beneficiary businesses are located in Leicester.
- The manufacturing Growth Programme has delivered most of its Leicester and Leicestershire activity (75%) outside of Leicester (just 25%).

b. By Ward

Geographic Analysis - By Ward					
Ward	Business Beneficiaries		Ward	Individual Beneficiaries	
Stoneygate	279	9%	Stoneygate	489	8%
North Evington	211	7%	North Evington	358	6%
Abbey	183	6%	Wycliffe	357	6%
Castle	200	6%	Abbey	313	5%
Spinney Hills	176	6%	Braunstone Park	282	5%
Wycliffe	201	6%	Castle	311	5%
Braunstone Park	158	5%	Western	318	5%
Western	158	5%	Beaumont Leys	274	4%
Beaumont Leys	121	4%	Evington	228	4%
Troon	126	4%	Fosse	232	4%
Belgrave	89	3%	Spinney Hills	265	4%
Evington	95	3%	Belgrave	195	3%
Fosse	101	3%	Humberstone & Hamilton	193	3%
Humberstone & Hamilton	108	3%	Rushey Mead	168	3%
Saffron	92	3%	Saffron	182	3%
Aylestone	62	2%	Aylestone	119	2%
Eyres Monsell	70	2%	Eyres Monsell	145	2%
Knighton	59	2%	Knighton	109	2%
Rushey Mead	76	2%	Thurncourt	122	2%
Thurncourt	72	2%	Troon	153	2%
Westcotes	62	2%	Westcotes	147	2%
County Wards Total	429	14%	County Wards Total	1299	21%

- Of the projects that provided full postcode data, there were more business and individual beneficiaries located in Stoneygate than any other ward (9% of business and 8% of individual beneficiaries). North Evington (7% of businesses, 6% of individuals) ranks 2nd for the numbers of ward beneficiaries.
- Abbey, Castle, Wycliffe, Braunstone Park are home to at least 5% of both business and individual beneficiaries.
- Westcotes, Thurncourt, Knighton, Eyres Monsell and Aylestone are home to just 2% of both business and individual beneficiaries respectively.

The tables over the page provide more detail of project beneficiary locations by ward.

Geographic Analysis - Business Beneficiary Ward																									
Project	Abbey	Aylestone	Beaumont Leys	Belgrave	Braunstone	Castle	Evington	Eyres Monsell	Fosse	Humberstone	Knighton	North Evington	Rushey Mead	Saffron	Spinney Hills	Stoneygate	Thurmcourt	Troon	Westcotes	Western	Wycliffe	LCC Total	County Wards	Overall Total	%
Green BELLE	7	4	4	1	1	18	0	0	2	1	3	13	1	0	3	4	0	21	3	6	1	93	113	206	45%
PROSPER	6	0	0	0	3	6	0	0	0	1	0	0	0	0	2	0	0	6	1	0	1	26	76	102	25%
Growing Enterprise	58	20	40	29	63	36	25	29	39	38	18	35	32	35	19	47	29	25	19	65	31	732	24	756	97%
Leicester Textiles Renewal	1	2	1	7	0	2	0	0	0	0	0	12	1	1	6	0	0	6	0	0	3	42	3	45	93%
Employment Hub	22	8	7	8	7	49	1	2	8	6	6	18	3	7	6	6	1	21	3	6	13	208	192	400	52%
Get Inspired Leicester	58	20	40	29	63	36	25	29	39	38	18	35	32	35	19	47	29	25	19	65	31	732	21	753	97%
Positive Communities	31	8	29	15	21	53	44	10	13	24	14	98	7	14	121	175	13	22	17	16	121	866	0	866	100%
Total	183	62	121	89	158	200	95	70	101	108	59	211	76	92	176	279	72	126	62	158	201	2699	429	3128	
%	6%	2%	4%	3%	5%	6%	3%	2%	3%	3%	2%	7%	2%	3%	6%	9%	2%	4%	2%	5%	6%	86%	14%		
Geographic Analysis - Individual Beneficiary Ward																									
Growing Enterprise	58	20	40	29	63	36	25	29	39	38	18	35	32	35	19	47	29	25	19	65	31	732	24	756	97%
Leicester Graduate City	0	0	0	0	0	20	0	0	2	2	0	1	0	5	6	4	0	0	5	1	1	47	4	51	92%
Leicester Textiles Renewal	5	2	5	13	4	1	10	0	9	3	0	66	8	1	12	11	0	3	1	2	25	181	4	185	98%
She Inspired Bus. Playbox	2	1	7	10	5	5	0	1	1	4	2	5	8	0	1	12	2	5	3	0	7	81	4	85	95%
Employment Hub	8	5	7	4	7	6	8	0	2	7	2	4	5	5	4	6	3	4	4	9	9	109	85	194	56%
Get Inspired Leicester	58	20	40	29	63	36	25	29	39	38	18	35	32	35	19	47	29	25	19	65	31	732	21	753	97%
YES	24	16	12	8	16	14	25	8	14	21	14	30	6	26	44	69	13	7	11	33	38	449	310	759	59%
GREAT	36	7	29	16	41	17	23	24	25	16	14	12	11	17	10	24	3	21	8	44	23	421	343	764	55%
Moneywise Plus	75	38	99	46	60	109	56	44	74	38	23	61	41	42	19	81	27	30	49	79	55	1146	489	1635	70%
Leicester Comm. ESOL	16	2	6	25	2	14	12	0	14	2	4	11	18	2	10	13	3	11	11	4	16	196	15	211	93%
Positive Communities	31	8	29	15	21	53	44	10	13	24	14	98	7	14	121	175	13	22	17	16	121	866	0	866	100%
Total	313	119	274	195	282	311	228	145	232	193	109	358	168	182	265	489	122	153	147	318	357	4960	1299	6259	
%	5%	2%	4%	3%	5%	5%	4%	2%	4%	3%	2%	6%	3%	3%	4%	8%	2%	2%	2%	5%	6%	79%	21%		

4.0 Alignment to the UKSPF Programme

As part of the UKSPF Investment Plan, Leicester City Council identified a number of local challenges and opportunities under a range of Supporting Local Businesses and People & Skills investment priorities. Leicester's UKSPF programme will need to provide a portfolio of projects that cover the output and outcome interventions identified by Leicester City Council.

4.1 Interventions

Leicester City Council have identified indicative outputs and outcomes for the following Supporting Local Businesses interventions.

- E16** Open markets & town centre retail & service sector
- E23** Strengthening local entrepreneurial ecosystems
- E24** Training hubs, business support offers, incubators
- E26** Growing the local social economy
- E29** Supporting decarbonisation whilst growing the local economy
- E30** Business support measures to drive employment growth.

Leicester City Council have identified indicative outputs and outcomes for the following Employment and Skills interventions:

- E33** Employment support for economically inactive people
- E34** Courses including basic, life & career skills
- E36** Increased levels of digital inclusion, essential digital skills
- E37** Tailored support for the employed to access courses
- E38** Local areas to fund local skills needs
- E40** Retraining support – high carbon sectors
- E41** Local digital skills.

The table over the page illustrates which projects align with each intervention. Where there are gaps, this provides an opportunity to focus any Grant Scheme on those areas as well as to seek future projects which fill these gaps.

4.2 Alignment with Interventions

Project Alignment													
Project	Interventions												
	E16	E23	E24	E26	E29	E30	E33	E34	E36	E37	E38	E40	E41
Green BELLE					✓								
Leicestershire Growth Hub		✓	✓										
Leicester Life Sciences Accelerator			✓										
STAR			✓		✓								
PROSPER			✓										
Leicester Innovation Accelerator			✓										
Growing Enterprise		✓	✓										
Manufacturing Growth Programme			✓										
Better Off in Business		✓											
Leicester Graduate City						✓							
East Midlands Accelerator	✓				✓		✓		✓				
Leicester Textiles Renewal			✓					✓		✓	✓		
She Inspired Business Playbox		✓					✓	✓		✓	✓		
Leicestershire Employment Hub						✓	✓						
Get Inspired Leicester							✓	✓					
YES							✓	✓					
GREAT							✓	✓					
Moneywise Plus							✓	✓	✓				✓
Skills Support for the Unemployed							✓	✓					
Community Grants							✓	✓				✓	
Leicester Community ESOL Project							✓	✓		✓	✓		
Positive Communities								✓		✓	✓		
Total													

Supporting Local Businesses Interventions

- **East Midlands Accelerator** was the only project offering advice and guidance to town centre retail businesses (**E16**); the CRF project included support for retail/hospitality businesses to develop a digital marketplace (either online trading or to drive footfall).
- There are a number of projects involved in local entrepreneurial ecosystems (**E23**) and delivering business support offers (**E24**), which leaves scope for consolidation.
- None of the projects would likely be supported under the social economy intervention. It is worth acknowledging that the **Community Grants** project aligned with the **E26** social value intervention; a grants scheme that distributes funding to CVS organisations would similarly align with this intervention.
- Although both the **Green BELLE, STAR** and **East Midlands Accelerator** projects support decarbonisation (**E29**), the approaches were very different; Green BELLE comprised grant funding whereas the East Midlands Chamber delivered one-to-many sessions on simple low carbon topics. East Midlands Accelerator successfully delivered decarbonisation plans, whilst STAR has been more effective at delivering Carbon Literacy Accreditation. A skills or training programme could feature elements of sustainability courses instead but grant funding is unlikely to be wide reaching or as impactful due to constrained budgets.

People & Skills Interventions

- Most existing projects that could be funded under the Employment and Skills priority have targeted economically inactive people with support (**E33**), in many cases supplemented by basic, life and careers skills (**E34**), which leaves some scope for consolidation.
- **Moneywise** and the **East Midlands Accelerator** is the only project likely to deliver increased levels of digital inclusion via essential digital skills (**E36, E41**). However, EMA's Digital Accelerator was aimed at businesses rather than individuals.
- Few projects offered courses to those already in employment (**E37**). Both **Leicester Textiles Renewal** and **She Inspired Business Playbox** targeted a specific sector or gender respectively. Both projects are designed to improve skills levels (**E38**) in identified areas of need in Leicester and could qualify for People & Skills funding. **Positive Communities** and **Leicester Community ESOL** also provided vocational training to upskill participants to aim for higher level jobs
- Leicester City Council will likely need to consider procuring a new project to achieve any outputs/outcomes relating to retraining support in high carbon sectors (**E40**), as none of the projects directly align with the intervention.
- **East Midlands Accelerator** is the only project explicitly delivering to retail/hospitality businesses (**E16**) as part of their Digital Accelerator and Growth Voucher scheme.

(Note: this section does not determine which projects will be supported but demonstrates the type of activity which could be supported and has previously been delivered.)

5.0 Project Long List Assessment

This section assesses projects at a high level against the following criteria:

- Meets an identified need
- Performance and reach
- Geography of delivery
- Alignment with UKSPF interventions

5.1 Assessment Framework

Criteria	Red	Amber	Green
Meeting Identified Need <i>As established in the UKSPF Investment Plan</i>	Limited evidence of engaging with people furthest from the labour market or supporting target/prevalent sectors with key local challenges.	Some evidence of engaging with people furthest from the labour market or supporting target/prevalent sectors with key local challenges.	Strong evidence of engaging with people furthest from the labour market or supporting target/prevalent sectors with key local challenges.
Performance & Reach	Unlikely to meet half or more of contracted outputs and outcomes with little evidence of success in terms of performance with those furthest from the labour market.	Expecting to deliver at least half of contracted outputs and outcomes, or some evidence of success in terms of performance with those furthest from the labour market.	Expecting to deliver 90% or more of contracted outputs and outcomes, or strong evidence of success in terms of performance with those furthest from the labour market.
Geography	Limited delivery within the city / specifically targets non-priority area.	Delivers in Leicester but target area is wider than the city alone.	City focussed delivery or focussed in priority areas
Alignment with UKSPF Interventions	Limited alignment with UKSPF interventions and major changes to scope required. CRF/EU project team likely to be dispersed.	Some alignment with UKSPF interventions at a general level but with changes to scope required. CRF/EU project team likely to be dispersed.	Strong, clear alignment with one or more UKSPF interventions and only minor changes to scope required. CRF/EU team likely to remain in place.

5.2 Long List Assessment - Summary

Theme	Project	Meeting Identified Need	Performance & Reach	Geography	Alignment with UKSPF Interventions
Supporting Local Businesses	Green BELLE	Green	Orange	Orange	Orange
	Leicestershire Growth Hub	Green	Red	Orange	Green
	Leicester Life Sciences Accelerator	Green	Red	Red	Orange
	STAR	Green	Red	Orange	Orange
	PROSPER	Green	Orange	Red	Red
	Leicester Innovation Accelerator	Green	Green	Orange	Orange
	Growing Enterprise	Green	Orange	Orange	Green
	Manufacturing Growth Programme	Green	Green	Orange	Red
	Better Off in Business	Green	Green	Orange	Orange
	Leicester Graduate City	Green	Green	Green	Green
Mix	East Midlands Accelerator	Green	Orange	Orange	Orange
	Leicester Textiles Renewal	Green	Green	Green	Green
	She Inspired Business Playbox	Green	Orange	Green	Green
	Leicestershire Employment Hub	Green	Green	Orange	Green
People & Skills	Get Inspired Leicester	Green	Green	Orange	Green
	YES	Green	Green	Orange	Orange
	GREAT	Green	Green	Orange	Orange
	Moneywise Plus	Green	Green	Orange	Green
	Skills Support for the Unemployed	Green	Orange	Orange	Green
	Community Grants	Green	Green	Orange	Orange
	Leicester Community ESOL Project	Green	Green	Green	Orange
	Positive Communities	Green	Orange	Green	Green

5.2 Long List Assessment

Theme	Project	Meeting Identified Need	Performance & Reach	Geography	Alignment with UKSPF Interventions
Supporting Local Businesses	Green BELLE	Low Carbon economy expected to be a priority nationally.	<ul style="list-style-type: none"> All available funding allocated, supported 205 of the target 212 businesses, including Textiles and Manufacturing. The project is unlikely to achieve the full target for GHG emissions reductions - although this figure uses unconfirmed GHG reductions for 83 SMEs where the final GHG is still to be determined. 	LEP-wide	Supports decarbonisation (E29) but likely to need a £1m budget.
	Leicestershire Growth Hub	Focus on micro and small businesses which make up 98.1% of business base.	<ul style="list-style-type: none"> Supported 255 businesses out of the 590 targeted according to the UKSPF Template provided. With delivery still underway more outputs are expected to be achieved before the end of the programme. 	LEP-wide	Supports entrepreneurial ecosystems (E23) and provides a business support offer (E24).
	Leicester Life Sciences Accelerator	Designed to meet strategic demand for support the Leicester Science and Innovation Enterprise Zone, plus supporting high growth Life Sciences SMEs.	<ul style="list-style-type: none"> The project is projected to at least achieved its contractual targets for businesses engaging with research entities and introducing new to the market products. Although engaging with 87% of the target SMEs, outputs relating to employment and new products will be missed. Number of Life Science, MedTech and Healthcare sector businesses located in the area is thought to be relatively small. 	LEP-wide with ambitions to operate regionally. Struggled to operate in a restricted area.	Provides business support/ incubation (E24) but likely to be retained and supported by UoL's Biomedical Research Centre.
	STAR	Designs meet strategic demand for support the Leicester Science and Innovation Enterprise Zone, plus supporting high growth Space Science, Engineering SMEs etc.	<ul style="list-style-type: none"> Exceeded targets relating to Carbon Literacy Accreditation and courses (including sector-specific courses). Failed to achieve outputs relating to graduate placements (65%), sustainability audits (61%), and decarbonisation plans (28%). Supported just 27% of total businesses targeted. 	c.29% of delivery in Leicester. Ambitions to operate regionally	Provides business support/ incubation (E24) but likely to be delivered on a paid-for basis with or without UKSPF.
	PROSPER	Delivers innovation support to priority high-growth sectors to encourage productivity growth and survival, including Advanced Manufacturing and Engineering, Science and Technology, Creatives, Food & Drink Manufacturing	<ul style="list-style-type: none"> Although funds are still to be allocated, the team is confident of meeting most of the outputs without achieving 100%. Following the Growth Hub's expansion of their criteria of support to access more PA1 activity, the project has lost some prospective businesses to the Business Gateway. 	c.34% of delivery in Leicester; UoL and DMU better placed.	Innovation crucial to Leicester's strategic objectives but Loughborough Uni team expected to largely disbanded and unable to deliver.
	Leicester Innovation Accelerator	Designs meet strategic demand for support the Leicester Science and Innovation Enterprise Zone, plus supporting high growth Space Science, Engineering SMEs etc.	<ul style="list-style-type: none"> By project closure, the LIA is projected to overachieve in 5 of the 9 output targets, whilst reaching 85%+ in 2 of the remaining 4. With 3,614 Innovation Hub visitors, 1,472 Innovation Friday participants, 811 Technical Workshops participants, 114 Innovation projects delivered, 90 University-business collaborations, and £1.2m value of KTPs, the project has delivered a strong portfolio of outputs. 	57% of enquiries from Leicester City. Universities are not as well-placed to deliver place-based projects due to regional objectives.	Provides business support/ incubation (E24) but likely to be delivered on a paid-for basis with or without UKSPF.

Theme	Project	Meeting Identified Need	Performance & Reach	Geography	Alignment with UKSPF Interventions
	Growing Enterprise	Delivers early-start and post-start survival support and employment. Focus on largest sectors in Leicester (Wholesale, Admin, Retail, Manufacturing).	Between 75-90% of outputs achieved relating to businesses supported (including pre-starts), around 50% of new product outputs achieved.	LEP-wide but c.50% beneficiaries in Leicester	Support for pre-starts, new starts and trading, offering business advice (E24). NBV team reliant on UKSPF to continue delivery.
	Manufacturing Growth Programme	Delivers growth support to core priority sectors (Engineering, Textiles, FDM).	<ul style="list-style-type: none"> Achieved 100%+ for both outputs in LLEP; c.85% of jobs created targets met, plus 47 jobs safeguarded. Outcomes relating to new businesses surpassed; relating to new products unachieved. 	25% of beneficiaries located in Leicester. Pan-LEP projects unlikely to be feasible for Leicester to support individually.	No investment as of yet across 18 LEP areas, unlikely to benefit from economies of scale of previous project; functions and scope would be limited.
	Better Off in Business	Support hard to reach 18 to 30yr olds groups to move into self-employment (setting up a business), but most have relatively high levels of educational attainment and start-up support is less important than survival.	<ul style="list-style-type: none"> The project is projected to achieve 94% of contractual targets in at least 3 of the 4 outputs, despite forecasting 82% of enterprises engaged. However, nearly all participants have relatively high levels of educational attainment. LLEP ranks 3rd (out of 9 LEP areas) in terms of performance for supporting disadvantaged young people, with around a third of young people from the most disadvantaged quintile. 	<p>Hub-and-spoke model based in Leicester most likely.</p> <p>Pan-LEP projects unlikely to be feasible for Leicester to support individually.</p>	Designed to strengthen the entrepreneurial ecosystem, encouraging self-employment/ business creation. Likely to lose economies of scale benefits associated with 9 LEP coverage.
	Leicester Graduate City	Worked with priority sectors that benefit from higher level skills to improve productivity, which is 15% below national average per filled job. Graduate retention rate (28.0%) lower than national average (48.4%). 24% of LLEP businesses thought those recruited from colleges/university were poorly prepared for work; 42% have some capacity to offer work experience placements.	<ul style="list-style-type: none"> Projects overachieving against outcomes. 126% of target number of businesses engaged as of September 2022. 106% of target number of internships (50 out of 47 internships). Strong project cohort of young people (98%), women (67%) and BAME (61%). 	Vast majority of participants are city residents. UoL/DMU programmes provide county-wide added value.	Directly facilitates employment via internships (E30) and supports entrepreneurship (E23) via work placements. Potential to deliver more of a levelling up agenda.
Mix	East Midlands Accelerator	Start Up to Scale Up Accelerator supports resilience (5yr survival rate 4.0% below regional average). Supported High Street businesses who could occupy Leicester Market.	<ul style="list-style-type: none"> Overall achieved 108% of output targets and 80% of outcome targets. 8 of the 14 outputs/outcome targets were achieved, including 335% of the job creation targets, 867% of the new products targets, and 130% of the decarbonisation plans targets. Focus on largest sectors in Leicester (Wholesale, Admin, Retail, Manufacturing). 	Leicestershire wide.	The five 'Accelerators' focus on decarbonisation (E29), the high street (E16), and digital skills (E36, E41). Unlikely that UKSPF will fund all 5 Accelerators – e.g. Kickstart has ended (E33, E30).

Theme	Project	Meeting Identified Need	Performance & Reach	Geography	Alignment with UKSPF Interventions
	Leicester Textiles Renewal	Leicester employs a fifth of the UK's textiles workforce, characterised by low pay and in need of upskilling. Textiles is a core sector. Resident pay in Leicester is 17% below national average,	<ul style="list-style-type: none"> The project has achieved 6 of the 7 outcome targets, including those relating to education training, job-searching following support, new products, jobs safeguarded, knowledge transfer activity and innovation plans. Strong success amongst economically inactive participants (achieved 271% of target) and those already in employment (124%). Overall achieved 110% of targets for individual learner participants. Strong project performance with those furthest from the labour market (60%), women (96%) and BAME (92%). 	Most beneficiaries from LE5 (most deprived 5% nationally). City based. DWP identify Leicester East as a hotspot for unemployment.	Provides ESOL and workplace courses (E24, E37), with a local focus (E38). The Fashion Technology Academy also acts as a training hub for those in-work, out-of-work, and for businesses looking to upskill staff (E24); able to commence right away.
	She Inspired Business Playbox	Provides employment support. Lowest employment rate in Leicester is amongst Chinese (29.6%), Gypsy or Irish Traveller (34.3%) and Arab (34.6%) populations. Economic inactivity is higher for women (37.7% vs 22.4%).	<ul style="list-style-type: none"> More effective with economically inactive (133%) than employed (32%). Despite an overperformance amongst economically inactive participants, overall close to 73% of outputs have been achieved as of August 2022. 101% of outcomes achieved. Provides project support to BAME (93%) women to move into employment. Predominantly working with Asian/Asian British (75%). 	Leicester only.	Beneficiaries engage in life skills (E34), qualifications (E37), as well as employment skills (E33) for the vulnerable and under-represented. Future funding unclear.
	Leicestershire Employment Hub	City unemployment rate (5.6%) higher than the national average (3.8%). 13.1% of Leicester's population is aged 18-24, higher than 8.9% nationally. Targets Care and Construction priority sectors. 3 in 10 LLEP businesses would like support for business planning, growth and recruitment. 38% have experienced difficulties with recruitment in the last 6 months.	<ul style="list-style-type: none"> Despite project continuing until December 2023, to date, all outputs and outcomes relating to recruitment have been met. 100% of outputs and outcomes completed relating to businesses engaged with recruitment support, businesses receiving a positive recruitment outcome. Links individuals, mostly young people (74%) and predominantly Asian beneficiaries, into employment. 	Leicestershire wide but Leicester based.	Based on available E30 funding, the Employment Hub could continue operating without partners but with a core City Council team to offer the impartial recruitment offer to businesses, and the economically inactive (E33) across Leicester. Funding already secured until December 2023.
People & Skills	Get Inspired Leicester	Links to delivery of Youth Employment Hub. Unemployment rate (5.6%) higher than the national average (3.8%). 13.1% of Leicester's population is aged 18-24, higher than 8.9% nationally. 24% of LLEP businesses thought those recruited from colleges/university were poorly prepared for work.	<ul style="list-style-type: none"> Project overperforming in most outputs as of 2022 Q3, plus significant overperformance in terms of outcomes relating to ethnicity, disability, lack of basic skills. Effectively targets BAME (56%) and those with disabilities (38%). Supported many more individuals than contracted, including 30% without basic skills, and 15% living in a single adult households with dependent children. 	Majority city residents but county eligible too.	Particularly effective at targeting economically inactive (E33). Funding already secured until December 2023.

Theme	Project	Meeting Identified Need	Performance & Reach	Geography	Alignment with UKSPF Interventions
	YES	Provides employment support to young people. Unemployment rate (6.8%) higher than the national average (4.6%). 13.1% of City population aged 18-24 vs 8.9% nationally.	<ul style="list-style-type: none"> Expecting to support 151 unemployed into employment (91%), 180 exit into training (86%), and 200 inactive into employment, self-employment or job search (79%). Projected to achieve 103% of target for economically inactive participants, 102% of disability targets, c.90% for men, women, and ethnic minorities. 	Majority Leicester-based but open to county residents.	Provides life skills to improve confidence and self-esteem (E34) prior to employment skills (E33). Risk of team winding down prior to commissioning.
	GREAT	Leicester is characterised by a gender imbalance in terms of economic inactivity (37.7% for women vs 22.4% men). Greatest proportion of NEET include: troubled families. NEET rate of 4.8% in Leicester.	<ul style="list-style-type: none"> Expecting to support 110 unemployed into employment (100%), 131 exit into education or training (85%) and 213 inactive into employment, self-employment or job search (85%). Projected 119% of target for women, 99% for economically inactive targets, 95% for ethnic minorities. Targets NEET family members, mostly female (70%). 	Majority Leicester-based but open to county residents.	Provides life skills to improve confidence and self-esteem (E34) prior to employment skills (E33). Risk of team winding down prior to commissioning.
	Moneywise Plus	Financial vulnerability is a barrier to gaining employment and accessing employment provision. Over-indebtedness (23.4%) higher than national average. Of the residents who did not work because of sickness/disability, 39% reported running out of money by the end of the month.	<ul style="list-style-type: none"> Overachieved on job search targets (122%), achieved 90% of education/training target, and overachieved by 90 employment results so far. Overachieved by a considerable margin on 8 of out 9 soft outcomes, include skills such as: managing personal finances, accessing and managing online accounts, and increasing use of the internet. Targeted high proportion of over 50s (34%) and those with disabilities (48%). 	At present, the programme runs across Leicester and Leicestershire; most project members (c.75%) work predominantly in Leicester.	Basic skills (E34, E36, E41) (including digital and financial) identified as a key driver for UKSPF. Aiming to secure Santander Foundation funding for financial and digital inclusion programme.
	Skills Support for the Unemployed	Unemployment rate (5.6%) higher than the national average (3.8%). The rate of employment (economic activity excluding full-time students) is lowest amongst Leicester's Chinese (29.6%), Gypsy or Irish Traveller (34.3%) and Arab (34.6%) populations. 12.0% have no qualifications in Leicester, vs 6.4% nationally.	<ul style="list-style-type: none"> Overall delivered 109% of total outputs and 83% of outcomes. The project has achieved 38.5% (out of 40%) of the 2,500 starts, equating to c.800 progressions into employment, education, apprenticeships or traineeships. Project targets BAME groups (50%). Delivered just 24% of targets for economically inactive, 2% of apprenticeship outcomes, and 59% of employment outcomes. 	Leicestershire wide, but focus on ESOL in Leicester	Directly delivers employment support to the unemployed (E34), but none economically inactive. Project ending in March 2023.
	Community Grants	12% of the working age population in Leicester have no qualifications (vs 6.4% nationally). Unemployment (6.8%) is also higher than the national average (4.6%).	<ul style="list-style-type: none"> Engaged 522 people (125%); of those, 104 were moved into employment (144%). 63 people were moved into education (105%), plus 75 moved into volunteering and 2 helped into Higher Education. Targeted women (66%) and BAME (81%) beneficiaries via CVS organisations. 	Leicestershire wide and likely to require similar scale to be effective. 50% in LE2, 25% in LE5	Provides CVS organisations with funding to support economically inactive people into employment (E33). However, ESF was match funded by DFE; alternative funding likely to be required to make it feasible.

Theme	Project	Meeting Identified Need	Performance & Reach	Geography	Alignment with UKSPF Interventions
	Leicester Community ESOL Project	Pre-entry ESOL courses to improve employability prospects. Unemployment rate (6.8%) higher than the national average (4.6%). Those with poor English often fall into low pay work. Resident earnings in Leicester are 16% lower than national average. 7.0% can't speak English (3 rd highest Local Authority nationally).	<ul style="list-style-type: none"> 157 progressed onto a specially designed 4-week ESOL blended with IT course, 119 joined a life skills course. Around 80% of participants continued their education – into ESOL or a life skills course. Strong performance amongst over 50s (37%), women (71%), BAME (77%) and people with disabilities (35%). 	Leicester only.	<p>Designed to deliver support to the unemployed (E34) by addressing lack of high-quality ESOL provision.</p> <p>Project ended in September 2022.</p>
	Positive Communities	Focus on BAME (87% beneficiaries) for whom the employment rate is lower and women (66% beneficiaries).	<ul style="list-style-type: none"> Completed 107% of output targets and 92% of outcome targets. Had most success in delivering life skills (202%). However, only met 1 out of 6 individual outcome targets. By the end of the project, the programme had supported 866 participants with 606 securing 827 unique core outcomes (93% against target) and 497 securing 2,381 non-core outcomes (176% of the target). 	Leicester only, focus on Greater Highfields but with participation from nearly every ward in the city.	Designed to deliver support to the unemployed (E34) via life and career skills. Project considering National Lottery Community Fund to become legal entity.



Appendix A

Lessons Learnt