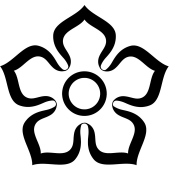


The information in this document has been used to support the preparation of the Local Plan. If you need assistance reading this document, or require it in a different format, please contact us via [email planning.policy@leicester.gov.uk](mailto:planning.policy@leicester.gov.uk) or call on 0116 454 0085.



Leicester City Council

Strategic Flood Risk Assessment 2022

Drawing Title
Surface Water Hotspots and Critical Drainage Areas

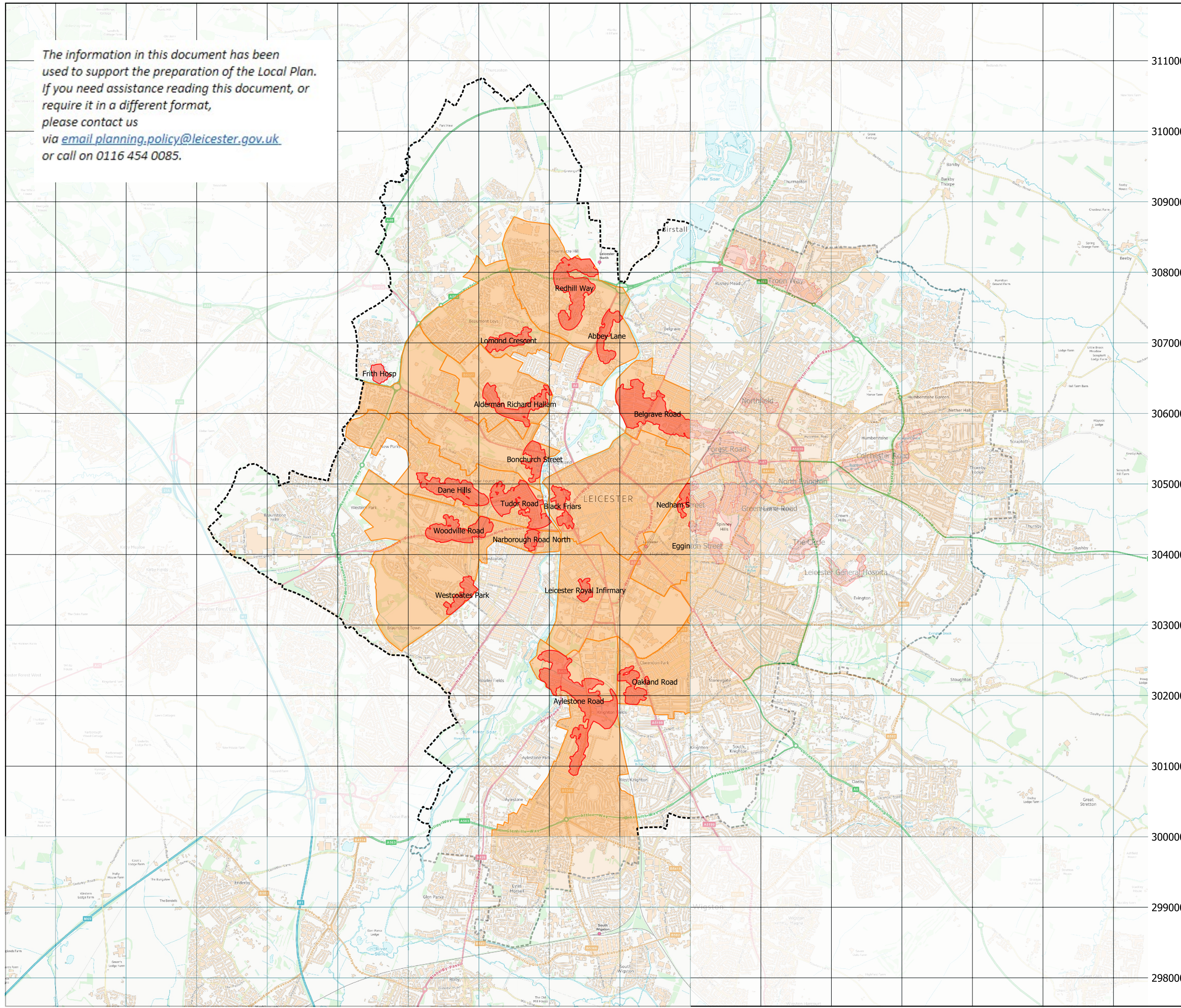
Map Number: **Scale:** 1:50000 @A3



LEGEND

- Leicester administrative boundary
- Surface Water Hotspots
- Critical Drainage Areas

This map was prepared solely for the Leicester 2022 Strategic Flood Risk Assessment. Flood risk data is periodically updated by the Risk Management Authorities (RMAs). When preparing a Flood Risk Assessment, planning applicants and consultants must obtain the most up to date information concerning flood risk from the RMAs. New information may be available which supercedes the data displayed on this map. This map is catchment scale and should not be relied upon at a local (planning application) scale. Contains OS data © Crown Copyright [and database right] (2022). Contains Environment Agency data © Copyright and/ or database right 2022.



451000 452000 453000 454000 455000 456000 457000 458000 459000 460000 461000 462000 463000 464000 465000 466000

311000
310000
309000
308000
307000
306000
305000
304000
303000
302000
301000
300000
299000
298000